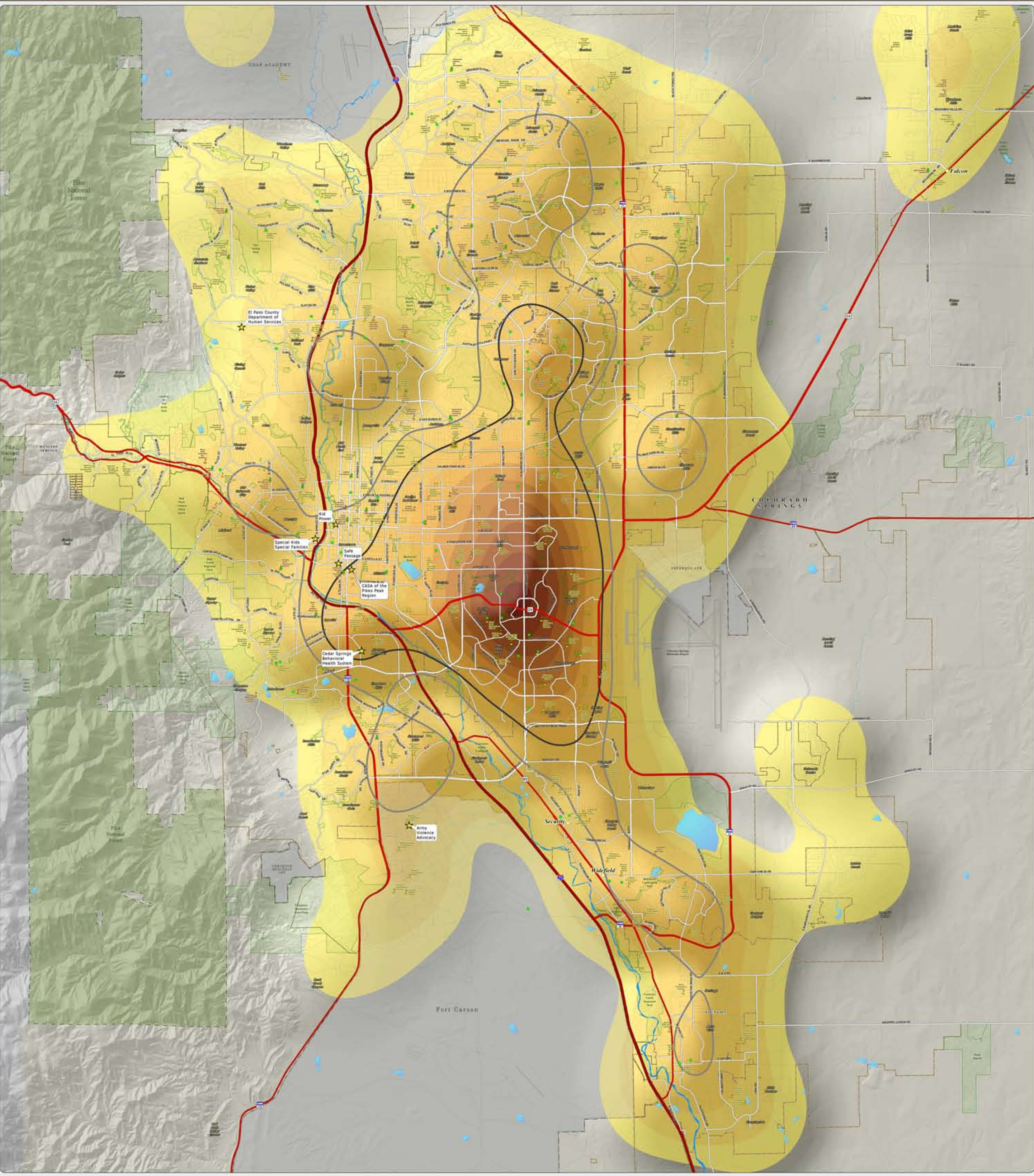


A. 2018 Referral Density Per Square Mile: This map of the Colorado Springs metro area shows the density of DHS child abuse/neglect referrals for the 2018 calendar year. The areas of no color represent the lowest density of 0-10 referrals per square mile. The yellow to dark orange colors represent areas of increased density, capped by the highest density of 275.1-285 referrals per square mile, as seen near the intersection of Academy Boulevard and Fountain Boulevard. The thick dark gray and light gray lines show the areas of high (greater than 100 referrals per square mile) and moderate (greater than 75, but less than 100 referrals per square mile) DHS referral density. The referral data was provided by the El Paso County Department of Human Services.





Map Produced: April 2019

Scale = 1:30,000

El Paso County Department of Human Services
Not One More Child Coalition
~ 211 Services With 2018 Referred Child Abuse Case Density ~

2018 Referrals*
Density Per Square Mile

| |
|----------------|
| 0 - 10 |
| 10.1 - 25 |
| 25.1 - 50 |
| 50.1 - 75 |
| 75.1 - 100 |
| 100.1 - 125 |
| 125.1 - 150 |
| 150.1 - 175 |
| 175.1 - 200 |
| 200.1 - 225 |
| 225.1 - 250 |
| 250.1 - 275 |
| 275.1 - 285.30 |

Legend

- High Density 2018 Referral Area (Greater than 100 Referrals Per Square Mile)*
- Moderate Density 2018 Referral Area (Greater than 75 Referrals Per Square Mile)*
- US Interstate Highways
- US Highways
- Major Roadways
- Streets & Roads
- Lakes & Reservoirs
- Creeks
- 211 Services
- Public Schools
- Private Schools
- Child Care Centers
- Unincorporated Towns
- Park Lands
- Incorporated Cities
- Pine National Forest
- Military Areas

*Data Source: El Paso County Department of Human Services