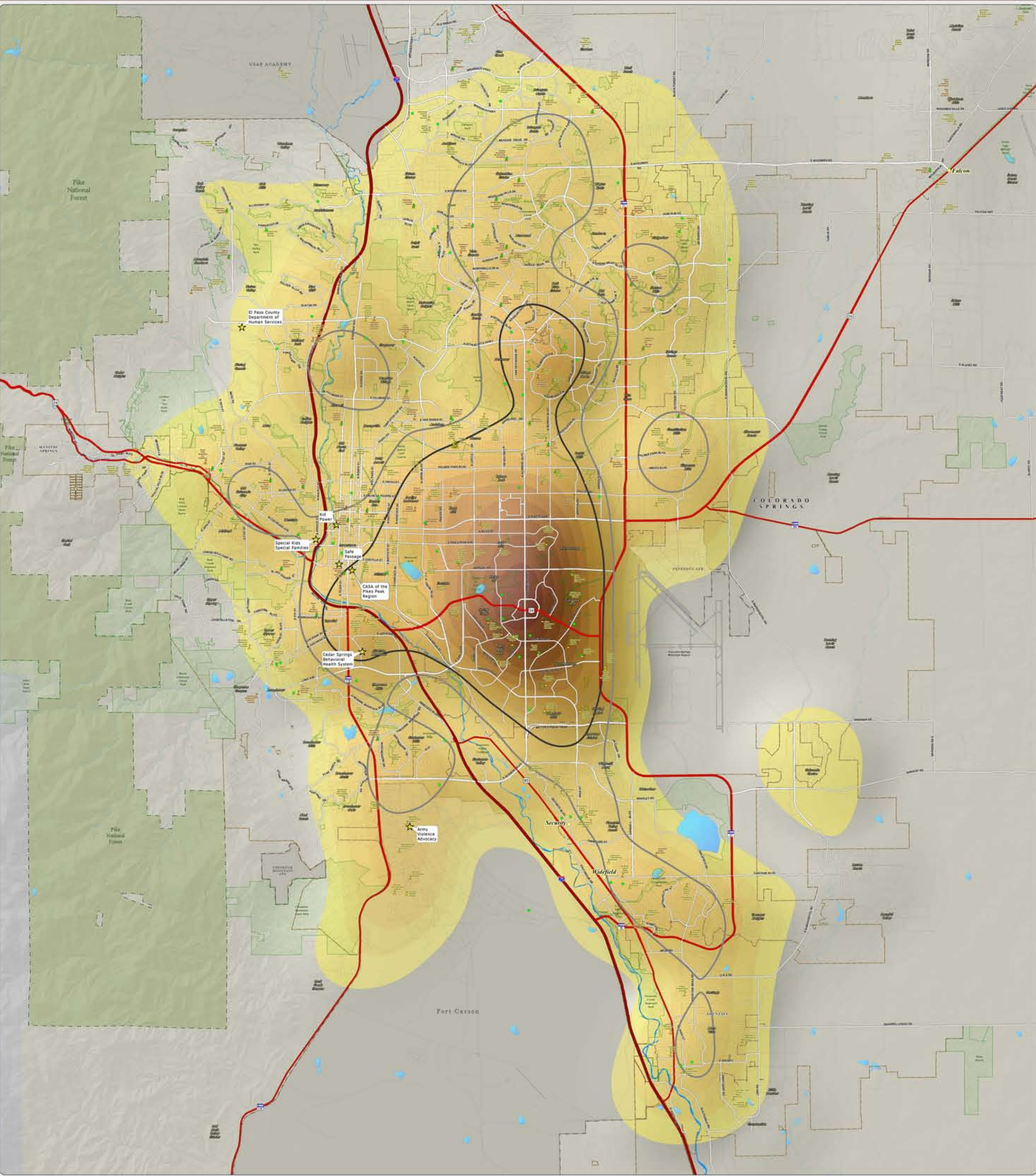


C. 2018 Founded Allegation Density Per Square Mile: This map of the Colorado Springs metro area shows the density of DHS child abuse/neglect founded allegations for the 2018 calendar year. The areas of no color represent the lowest density of 0-2 founded allegations per square mile. The yellow to dark orange colors represent areas of increased density, capped by the highest densities of 33-36 founded allegations per square mile, as seen near the intersection of Academy Boulevard and Fountain Blvd. The thick dark gray and light gray lines show the areas of high (greater than 100 referrals per square mile) and moderate (greater than 75, but less than 100 referrals per square mile) DHS referral density, as seen on the "NOMC-2017 Referrals Child Abuse Case Density" map. The founded allegation data was provided by the El Paso County Department of Human Services.





Map Produced: April 2018


El Paso County Department of Human Services
Not One More Child Coalition
~ 211 Services With 2018 Founded Child Abuse Case Density

Miles
Scale = 1:30,000

**2018 Founded*
Density Per Square Mile**

0-2
2-4
4-6
6-8
8-10
10-12
12-14
14-16
16-18
18-20
20-22
22-24
24-26
26-28
28-30
30-32
32-34
34-36

Legend

 High Density 2018 Founded Area (Greater than 100 Founded Cases Per Square Mile)	 211 Services
 Moderate Density 2018 Founded Area (Greater than 75 Founded Cases Per Square Mile)	 Public Schools
 US Interstate Highways	 Private Schools
 US Highways	 Child Care Centers
 Major Roadways	 Unincorporated Towns
 Streets & Roads	 Park Lands
Lakes & Reservoirs	Incorporated Cities
Creeks	Pike National Forest
	Military Areas

* Data Source: El Paso County Department of Human Services