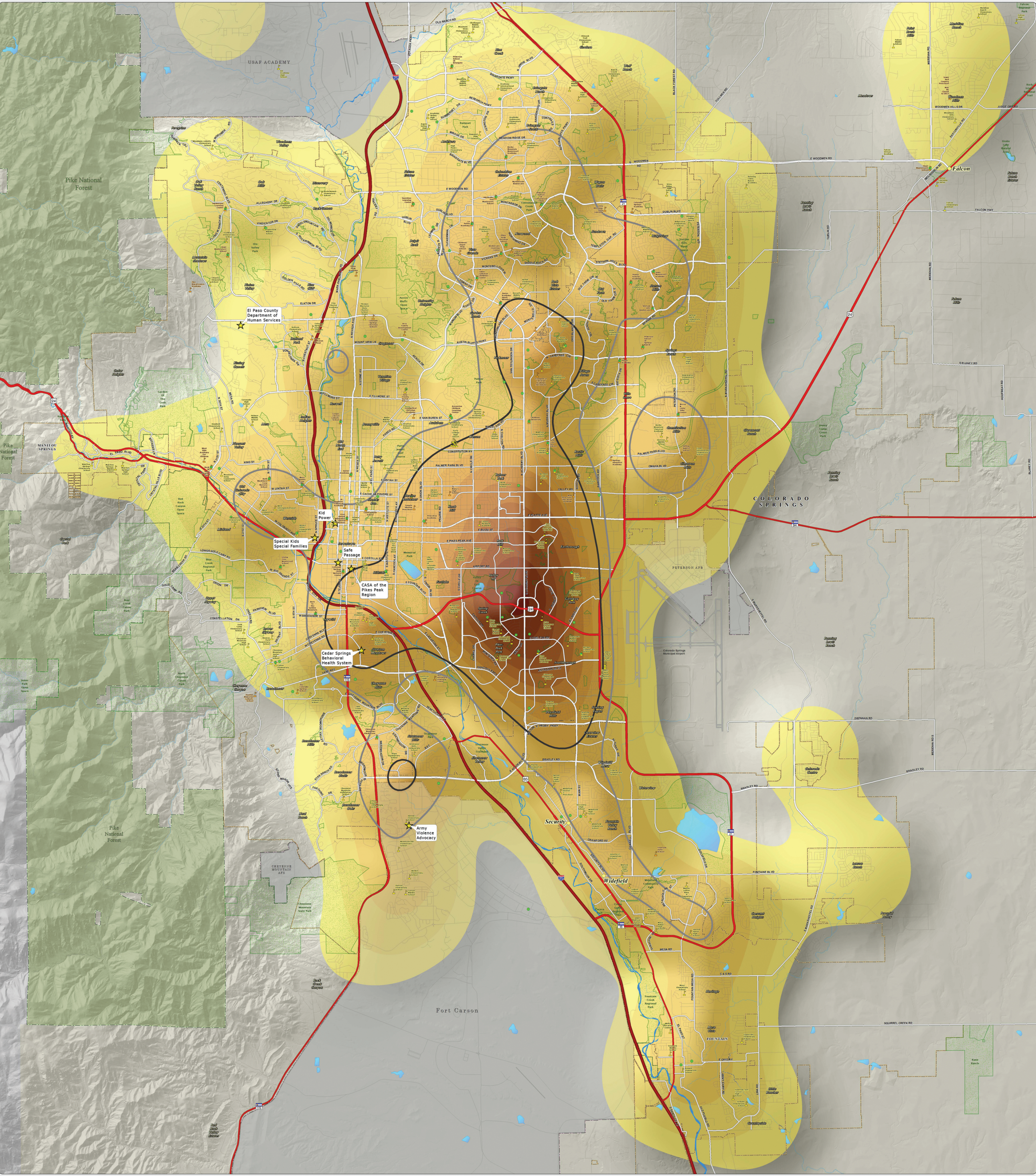


A. 2017 Referral Density Per Square Mile: This map of the Colorado Springs metro area shows the density of DHS child abuse/neglect referrals for the 2017 calendar year. The areas of no color represent the lowest density of 0-10 referrals per square mile. The yellow to dark orange colors represent areas of increased density, capped by the highest density of 275.1-282 referrals per square mile, as seen near the intersection of Academy Boulevard and Fountain Boulevard. The thick dark gray and light gray lines show the areas of high (greater than 100 referrals per square mile) and moderate (greater than 75, but less than 100 referrals per square mile) DHS referral density. The referral data was provided by the El Paso County Department of Human Services.



**El Paso County Department of Human Services
Not One More Child Coalition**
~ 211 Services With 2017 Referred Child Abuse Case Density ~

Map Produced: October 2018

Copyright 2018 by the Board of County Commissioners, El Paso County, Colorado. All rights reserved. This map is a representation of the data provided by the El Paso County Department of Human Services. The density of referrals is shown by the color of the areas. The density of referrals is shown by the color of the areas. The density of referrals is shown by the color of the areas.

2017 Referrals*

Density Per Square Mile

- 0 - 10
- 10.1 - 25
- 25.1 - 50
- 50.1 - 75
- 75.1 - 100
- 100.1 - 125
- 125.1 - 150
- 150.1 - 175
- 175.1 - 200
- 200.1 - 225
- 225.1 - 250
- 250.1 - 275
- 275.1 - 282

Legend

- High Density 2017 Referral Area (Greater than 100 Referrals Per Square Mile)
- Moderate Density 2017 Referral Area (Greater than 75 Referrals Per Square Mile)
- US Interstate Highways
- Major Roadways
- Streets & Roads
- Lakes & Reservoirs
- Creeks
- 211 Services
- Public Schools
- Private Schools
- Child Care Centers
- Unincorporated Towns
- Park Lands
- Incorporated Cities
- Pike National Forest
- Military Areas

*Data Source: El Paso County Department of Human Services