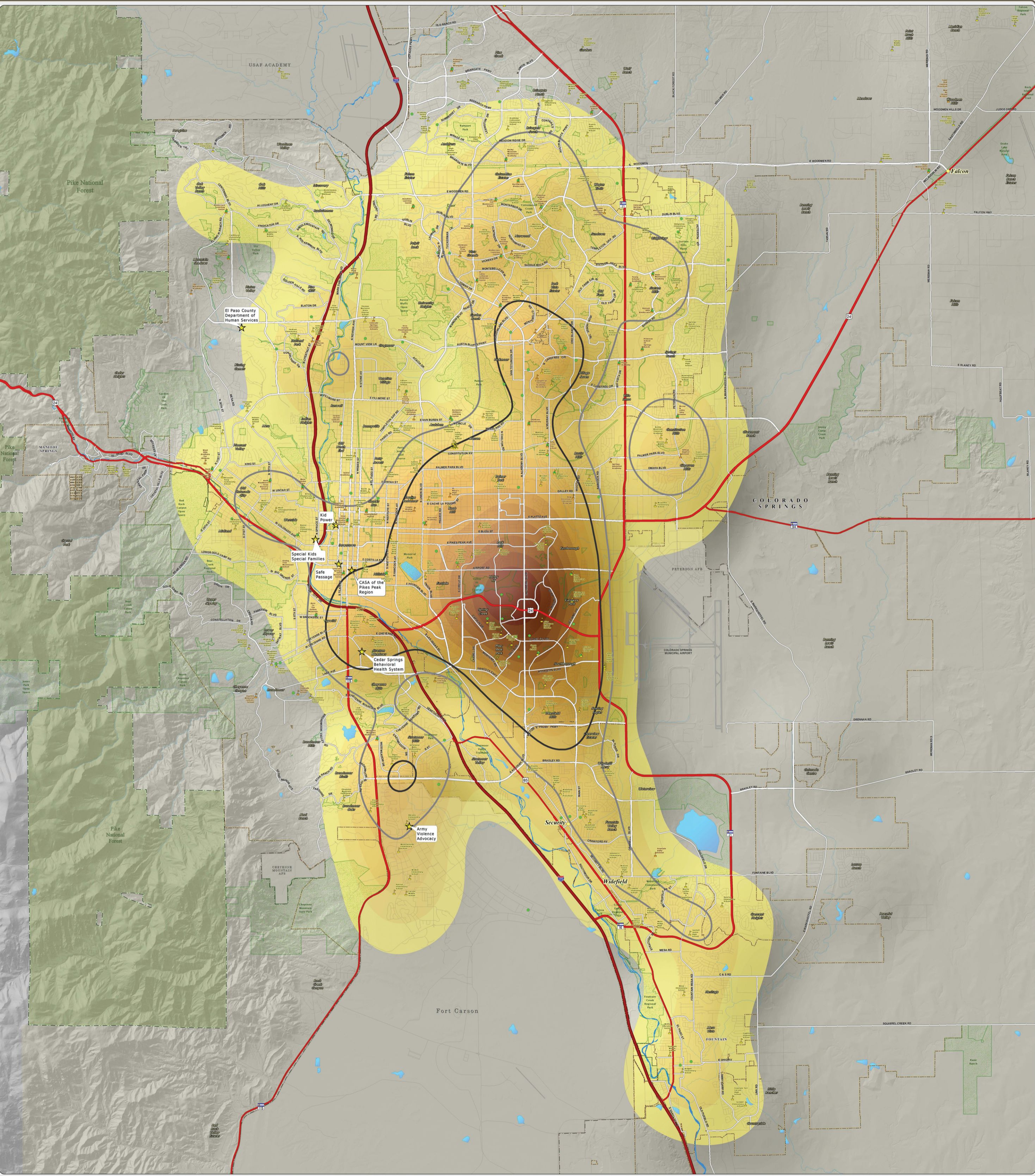



C. 2017 Founded Allegation Density Per Square Mile: This map of the Colorado Springs metro area shows the density of DHS child abuse/neglect founded allegations for the 2017 calendar year. The areas of no color represent the lowest density of 0-3 founded allegations per square mile. The yellow to dark orange colors represent areas of increased density, capped by the highest densities of 36. 1-40 founded allegations per square mile, as seen near the intersection of Academy Boulevard and Fountain Blvd. The thick dark gray and light gray lines show the areas of high (greater than 100 referrals per square mile) and moderate (greater than 75, but less than 100 referrals per square mile) DHS referral density, as seen on the "NOMC-2017 Referrals Child Abuse Case Density" map. The founded allegation data was provided by the El Paso County Department of Human Services.





Map Produced: October 2018

Copyright 2018 by the Board of County Commissioners, El Paso County, Colorado. All rights reserved. This map is the property of the Board of County Commissioners, El Paso County, Colorado. It is not to be reproduced, stored in a retrieval system, or transmitted in any form or by any means, electronic, mechanical, photocopying, recording, or by any information storage and retrieval system, without the prior written permission of the Board of County Commissioners, El Paso County, Colorado. The Board of County Commissioners, El Paso County, Colorado, is not responsible for any errors or omissions in this map.

**El Paso County Department of Human Services**  
**Not One More Child Coalition**  
~ 211 Services With 2017 Founded Child Abuse Case Density

1 0.5 0 Miles 2 3

Scale = 1:30,000

**2017 Founded\*  
Density Per Square Mile**

0 - 3
3.1 - 6
6.1 - 9
9.1 - 12
12.1 - 15
15.1 - 18
18.1 - 21
21.1 - 24
24.1 - 27
27.1 - 30
30.1 - 33
33.1 - 36
36 - 40

**Legend**

High Density 2017 Referral Area (Greater than 100 Referral Cases Per Square Mile) *	211 Services
Moderate Density 2017 Referral Area (Greater than 75 Referral Cases Per Square Mile) *	Public Schools
US Interstate Highways	Private Schools
US Highways	Child Care Centers
Major Roadways	Unincorporated Towns
Streets & Roads	Park Lands
Lakes & Reservoirs	Incorporated Cities
Creeks	Pike National Forest
	Military Areas

\* Data Source: El Paso County Department of Human Services