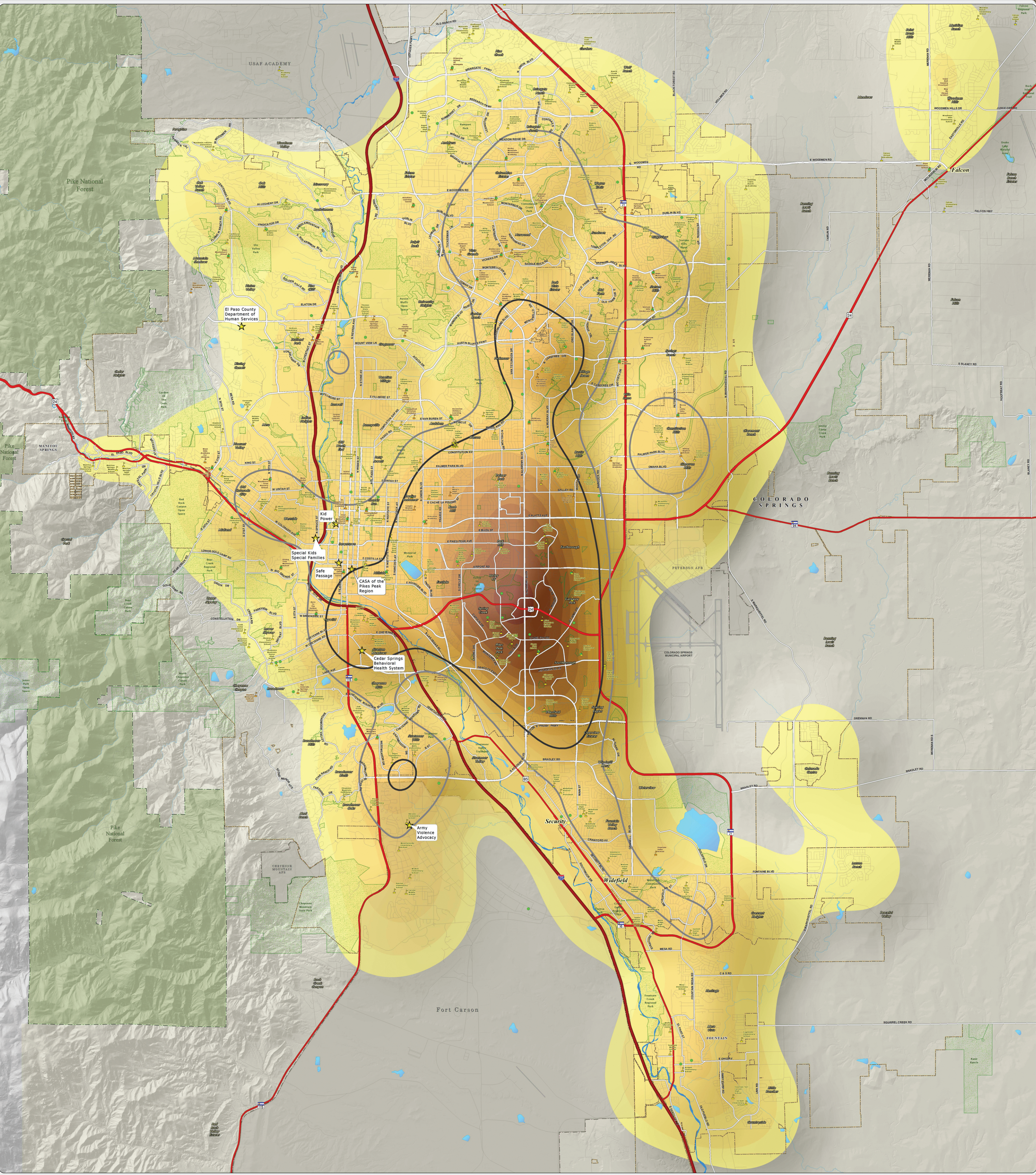


B. 2017 Assigned Assessment Density Per Square Mile: This map of the Colorado Springs metro area shows the density of DHS child abuse/neglect assigned assessments for the 2017 calendar year. The areas of no color represent the lowest density of 0-5 assigned assessments per square mile. The yellow to dark orange colors represent areas of increased density, capped by the highest density of 120.1-127 assigned assessments per square mile, as seen near the intersection of Academy Boulevard and Fountain Boulevard. The thick dark gray and light gray lines show the areas of high (greater than 100 referrals per square mile) and moderate (greater than 75, but less than 100 referrals per square mile) DHS referral density, as seen on the " NOMC-2017 Referrals Child Abuse Case Density " map. The assigned assessment data was provided by the El Paso County Department of Human Services.



Map Produced: October 2018

Copyright 2018 by the Board of County Commissioners, El Paso County, Colorado. All rights reserved. No part of this publication may be reproduced, stored in a retrieval system, or transmitted, in any form or by any means, electronic, mechanical, photocopying, recording, or by any information storage and retrieval system, without the prior written permission of the Board of County Commissioners, El Paso County, Colorado. This map is provided for informational purposes only and is not intended to be used for any other purpose.

El Paso County Department of Human Services
Not One More Child Coalition
~ 211 Services With 2017 Assessed Child Abuse Case Density

**2017 Assessed *
Density Per Square Mile**

0 - 5
6.1 - 10
10.1 - 20
20.1 - 30
30.1 - 40
40.1 - 50
50.1 - 60
60.1 - 70
70.1 - 80
80.1 - 90
90.1 - 100
100.1 - 110
110.1 - 120
120.1 - 127

Legend

- High Density 2017 Referral Area (Greater than 100 Referrals Per Square Mile) *
- Moderate Density 2017 Referral Area (Greater than 75 Referrals Per Square Mile) *
- US Interstate Highways
- US Highways
- Major Roadways
- Streets & Roads
- Lakes & Reservoirs
- Creeks
- 211 Services
- Public Schools
- Private Schools
- Child Care Centers
- Unincorporated Towns
- Park Lands
- Incorporated Cities
- Pike National Forest
- Military Areas

* Data Source: El Paso County Department of Human Services