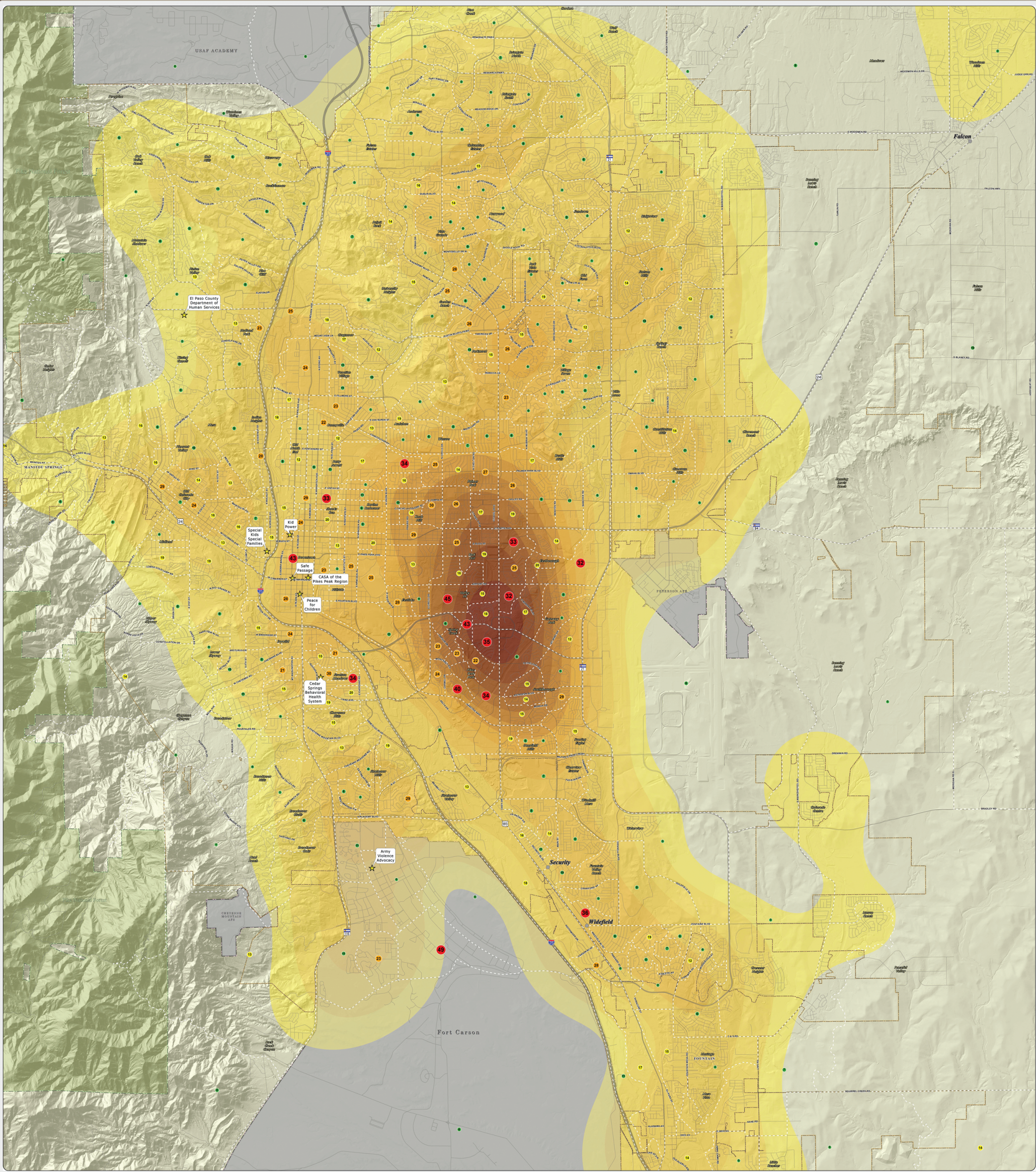




A. 2016 Referral Density Per Square Mile, with the poverty rate per census block group: This map of the Colorado Springs metro area shows the density of DHS child abuse/neglect referrals for the 2016 calendar year. The areas of no color represent the lowest density of 0-10 referrals per square mile. The yellow to dark orange colors represent areas of increased density, capped by the highest density of 275.1-301 referrals per square mile, as seen near the intersection of US 24 Highway and S Academy Blvd. The colored circles inside each census block group represent the percentage of residents that live below the poverty level according to the US Census Bureau. The referral data was provided by the El Paso County Department of Human Services.




El Paso County Department of Human Services
Not One More Child Coalition
~ 211 Services With 2016 Referral Density Per Square Mile ~
With Poverty Rates by Block Group



Map Produced: November 2017



Scale = 1:27,000



2016 Referrals

| Cases Per Square Mile |
|-----------------------|
| 0 - 10 |
| 10.1 - 25 |
| 25.1 - 50 |
| 50.1 - 75 |
| 75.1 - 100 |
| 100.1 - 125 |
| 125.1 - 150 |
| 150.1 - 175 |
| 175.1 - 200 |
| 200.1 - 225 |
| 225.1 - 250 |
| 250.1 - 275 |
| 275.1 - 301 |

Percent of Households Below Poverty Line*

| Percent |
|---------|
| 0 - 5 |
| 6 - 11 |
| 12 - 20 |
| 21 - 30 |
| 31 - 49 |

*Data Source: US Census Bureau

Legend

- 211 Services
- Unincorporated Towns
- US Interstate Highways
- Other Highways
- Major Roadways
- Streets & Roads
- Incorporated Cities
- Pike National Forest
- Military Areas