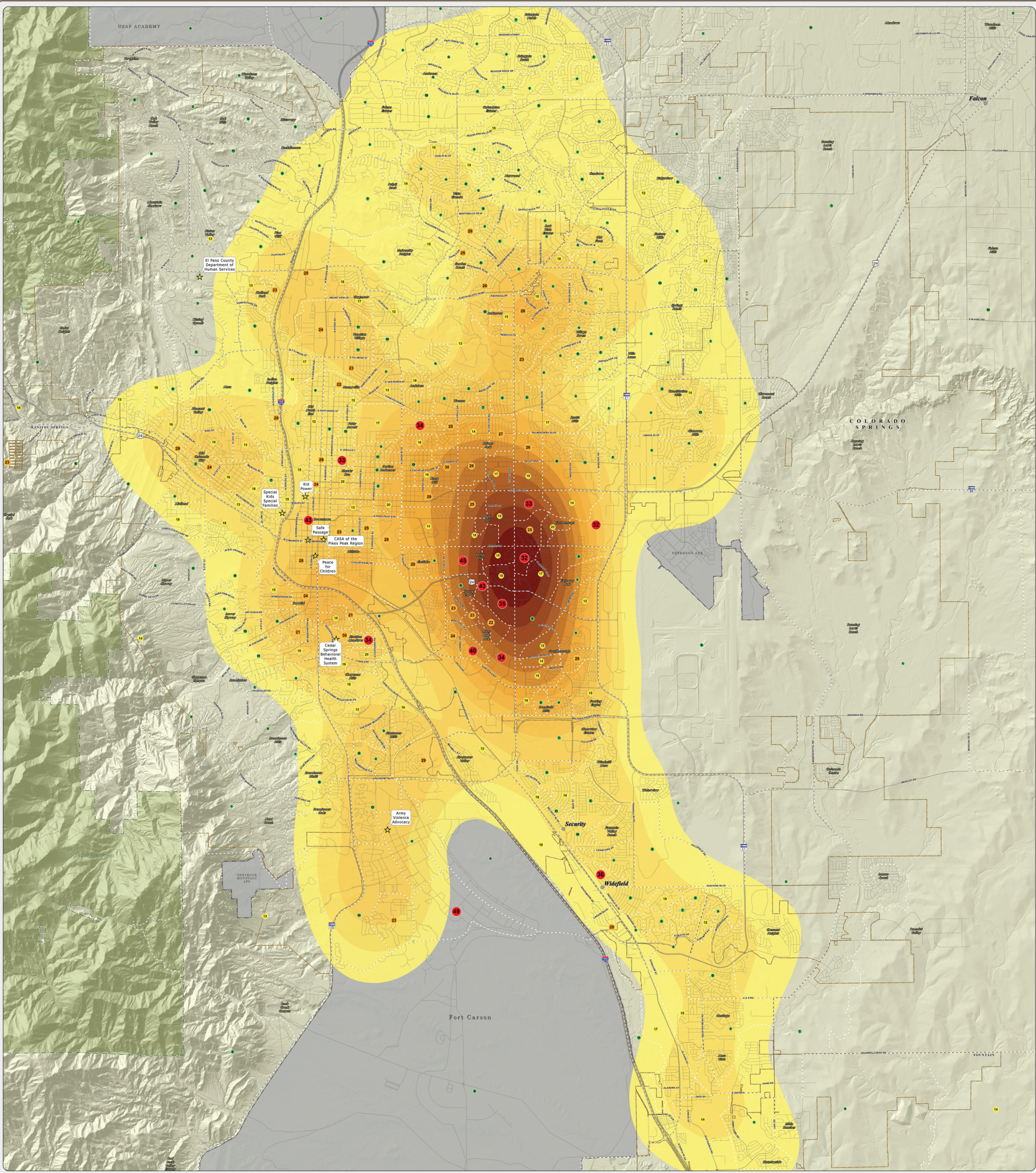




C. 2016 Founded Allegation Density Per Square Mile, overlaid with the poverty rate per US census block group: This map of the Colorado Springs metro area shows the density of DHS child abuse/neglect assigned assessments for the 2016 calendar year. The areas of no color represent the lowest density assigned assessments per square mile. The yellow to dark orange colors represent areas of increased density, capped by the highest density of 36.1-39 assigned assessments per square mile, as seen near the intersection of 24 Highway and S Academy Blvd. The colored circles inside each census block group represent the percentage of residents that live below the poverty level according to the US Census Bureau. The assigned assessment data was provided by the El Paso County Department of Human Services.





**El Paso County Department of Human Services**  
**Not One More Child Coalition**  
~ 211 Services With 2016 Founded Density Per Square Mile ~  
With Poverty Rates by Block Group

Map Produced: November 2017

Copyright 2017 by the Board of County Commissioners, El Paso County, Colorado. All rights reserved. This map is a copyrighted work of the Board of County Commissioners, El Paso County, Colorado. The information contained herein is for informational purposes only and does not constitute a warranty of any kind. The information is provided as is, without any representation or warranty of accuracy or reliability of the data contained herein.

Scale = 1:27,000

Miles

0 0.5 1 2 3

**2016 Founded**  
Density Per Square Mile

- 0-5
- 6.1-9
- 10-12
- 13-15
- 16.1-18
- 19-21
- 22-24
- 25-27
- 28-30
- 31-33
- 34-36
- 37-39

**Percent of Households**  
Below Poverty Line\*

- 0-5
- 6-11
- 12-20
- 21-30
- 31-49

\*Data Source: US Census Bureau

**Legend**

- 211 Services
- Unincorporated Towns
- US Interstate Highways
- Other Highways
- Major Roadways
- Streets & Roads
- Incorporated Cities
- Pike National Forest
- Military Areas