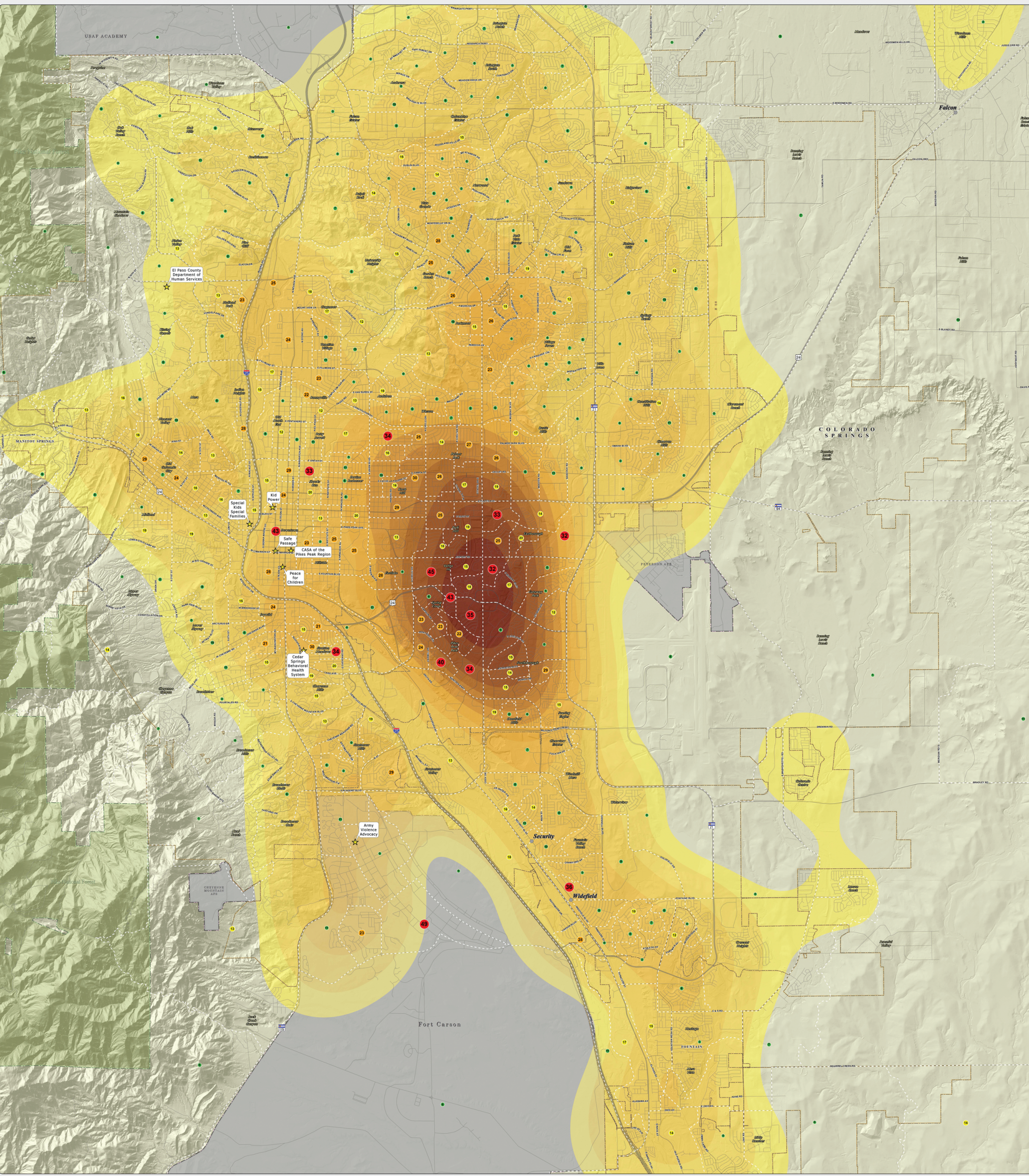


B. 2016 Assigned Assessment Density Per Square Mile, overlaid with the poverty rate per US census block group: This map of the Colorado Springs metro area shows the density of DHS child abuse/neglect assigned assessments for the 2016 calendar year. The areas of no color represent the lowest density assigned assessments per square mile. The yellow to dark orange colors represent areas of increased density, capped by the highest density of 120.1-138 assigned assessments per square mile, as seen near the intersection of US 24 Highway and S Academy Blvd. The colored circles inside each census block group represent the percentage of residents that live below the poverty level according to the US Census Bureau. The assigned assessment data was provided by the El Paso County Department of Human Services.



Map Produced: November 2017

El Paso County Department of Human Services
Not One More Child Coalition

~ 211 Services With 2016 Assigned Assessment Density Per Square Mile ~
With Poverty Rates by Block Group

1 0.5 0 2 3

Miles

Scale = 1:27,000

2016 Assessments
Density Per Square Mile

0-5	6-11	12-20	21-30	31-49	50-100	101-120	121-138
-----	------	-------	-------	-------	--------	---------	---------

Legend

Percent of Households Below Poverty Line*

0-5	6-11	12-20	21-30	31-49	50-100	101-120	121-138
-----	------	-------	-------	-------	--------	---------	---------

*Data Source: US Census Bureau

- 211 Services
- Unincorporated Towns
- US Interstate Highways
- Other Highways
- Major Roadways
- Streets & Roads
- Incorporated Cities
- Pike National Forest
- Military Areas