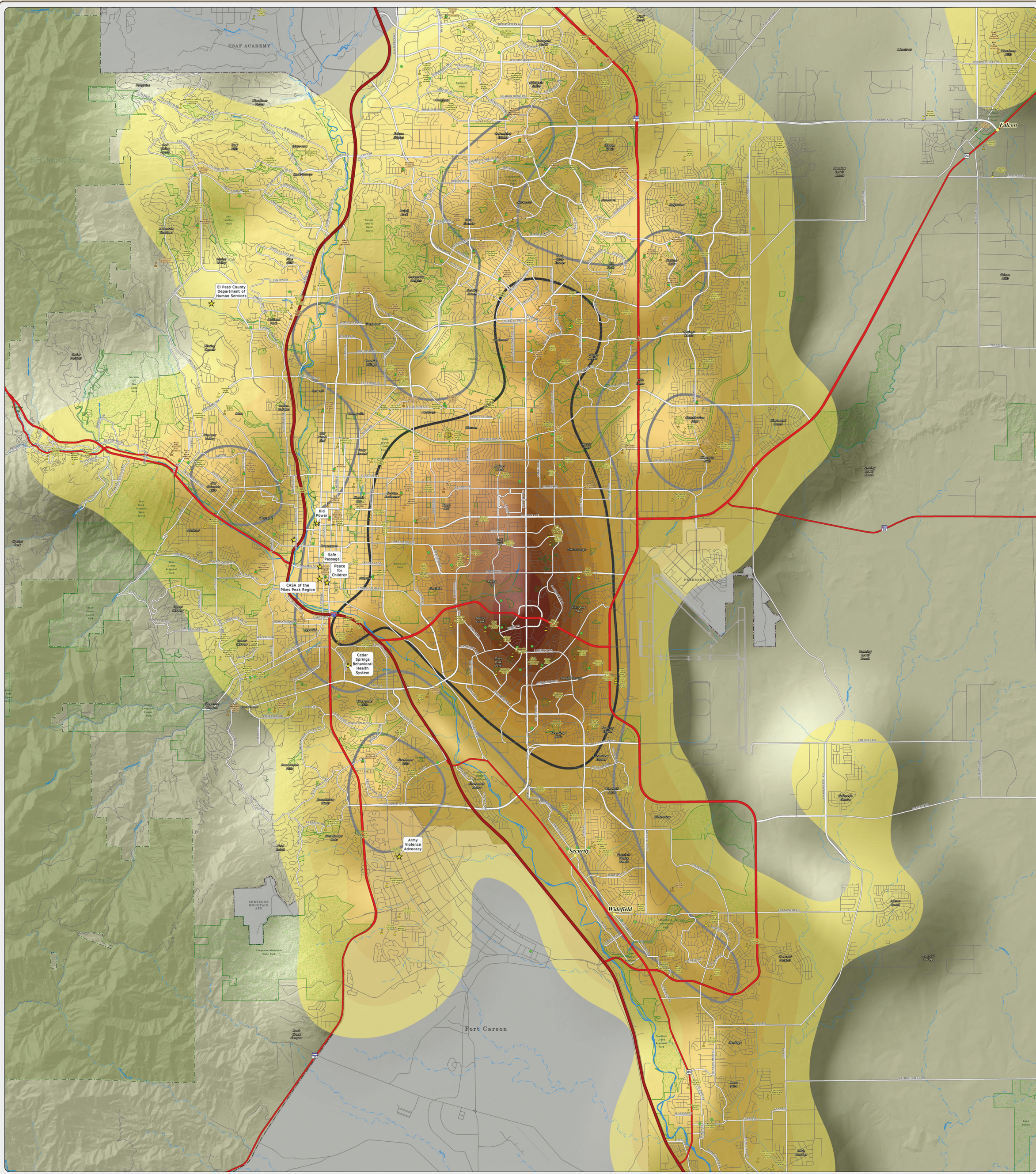
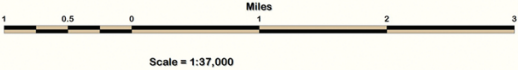


**A. 2016 Referral Density Per Square Mile:** This map of the Colorado Springs metro area shows the density of DHS child abuse/neglect referrals for the 2016 calendar year. The areas of no color represent the lowest density of 0-10 referrals per square mile. The yellow to dark orange colors represent areas of increased density, capped by the highest density of 275.1-301 referrals per square mile, as seen near the intersection of Academy Boulevard and Fountain Boulevard. The thick dark gray and light gray lines show the areas of high (greater than 100 referrals per square mile) and moderate (greater than 75, but less than 100 referrals per square mile) DHS referral density. The referral data was provided by the El Paso County Department of Human Services.



**El Paso County Department of Human Services  
Not One More Child Coalition**  
~ 211 Services With 2016 Referral Density Per Square Mile ~  
El Paso County, Colorado



**2016 Referrals  
Density Per Square Mile**

0 - 10
10.1 - 25
25.1 - 50
50.1 - 75
75.1 - 100
100.1 - 125
125.1 - 150
150.1 - 175
175.1 - 200
200.1 - 225
225.1 - 250
250.1 - 275
275.1 - 301

- Legend**
- High Density 2016 Referral Area (Greater than 100 Referrals Per Square Mile)
  - Moderate Density 2016 Referral Area (Greater than 75 Referrals Per Square Mile)
  - US Interstate Highways
  - US Highways
  - Major Roadways
  - Streets & Roads
  - Lakes & Reservoirs
  - Creeks

- 211 Services
- Public Schools
- Private Schools
- Child Care Centers
- Unincorporated Towns
- Park Lands
- Incorporated Cities
- Pike National Forest
- Military Areas

Map Produced: May 2017  
Copyright 2017 by the Board of County Commissioners, El Paso County, Colorado. All rights reserved. No part of this document or its contents may be reproduced, stored in a retrieval system, or transmitted in any form or by any means, electronic, mechanical, photocopying, recording, or by any information storage and retrieval system, without the prior written permission of the Board of County Commissioners, El Paso County, Colorado. This document is the property of El Paso County, Colorado, and is loaned to the user for informational purposes only. It is not to be distributed or otherwise used in any way without the prior written permission of the Board of County Commissioners, El Paso County, Colorado.