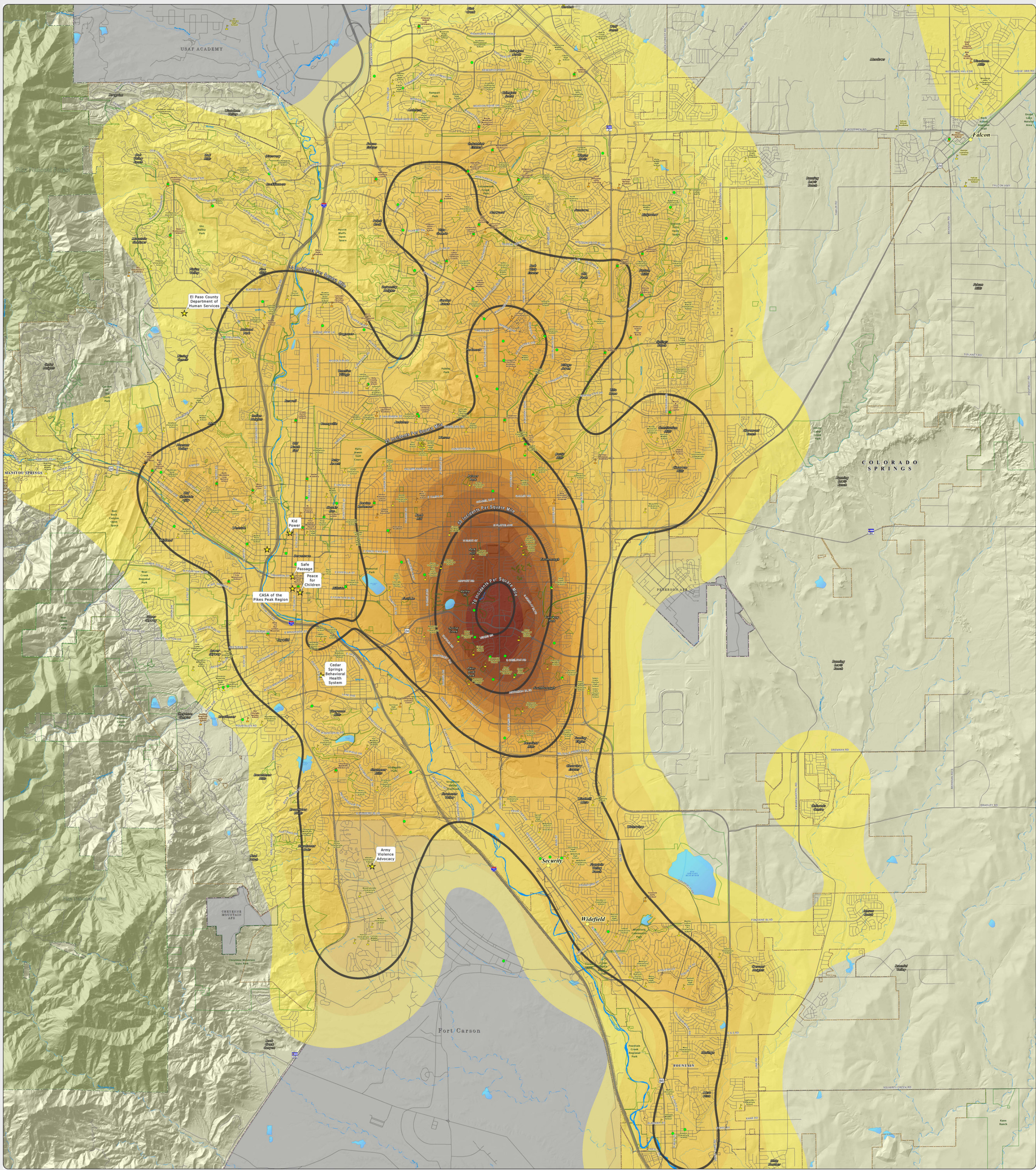


A. 2016 overall Referral Density Per Square Mile, with the Ages 0 – 5 subsets: This map of the Colorado Springs metro area shows the density of DHS child abuse/neglect referrals for the 2016 calendar year. The areas of no color represent the lowest density of 0-10 referrals per square mile. The yellow to dark orange colors represent areas of increased density, capped by the highest density of 275.1-301 referrals per square mile, as seen near the intersection of Academy Boulevard and Fountain Boulevard. The labeled thick black lines show the densities of incidents specific to children ages 0 – 5, scaled to match the scale for the overall referral density. The referral data was provided by the El Paso County Department of Human Services.



Map Produced: September 2017

Copyright 2017 by Not One More Child Coalition. All rights reserved. No part of this publication may be reproduced, stored in a retrieval system, or transmitted, in any form or by any means, electronic, mechanical, photocopying, recording, or by any information storage or retrieval system, without prior written permission from the Not One More Child Coalition. The use of this publication is for informational purposes only. The Not One More Child Coalition is not responsible for any errors or omissions in this publication.

Not One More Child Coalition
2016 Overall Referral Density Per Square Mile
~ With Ages 0 - 5 Densities ~
El Paso County Department of Human Services

1 0.5 0 Miles 2 3

Scale = 1:27,000

2016 Referrals
Density Per Square Mile

- 0-10
- 10.1-25
- 25.1-50
- 50.1-75
- 75.1-100
- 100.1-125
- 125.1-150
- 150.1-175
- 175.1-200
- 200.1-225
- 225.1-250
- 250.1-275
- 275.1-301

2016 Referral
Ages 0-5
Density Per Square Mile

- 0-10
- 10.1-25
- 25.1-50
- 50.1-75
- 75.1-100
- 100.1-125
- 125.1-150
- 150.1-175
- 175.1-200
- 200.1-225
- 225.1-250
- 250.1-275
- 275.1-301

Legend

- 211 Services
- Public Schools
- Private Schools
- Child Care Centers
- Unincorporated Towns
- Lakes & Reservoirs
- Creeks
- US Highways
- Colorado State Highways
- Major Roadways
- Streets & Roads
- Park Lands
- Incorporated Cities
- Pike National Forest
- Military Areas