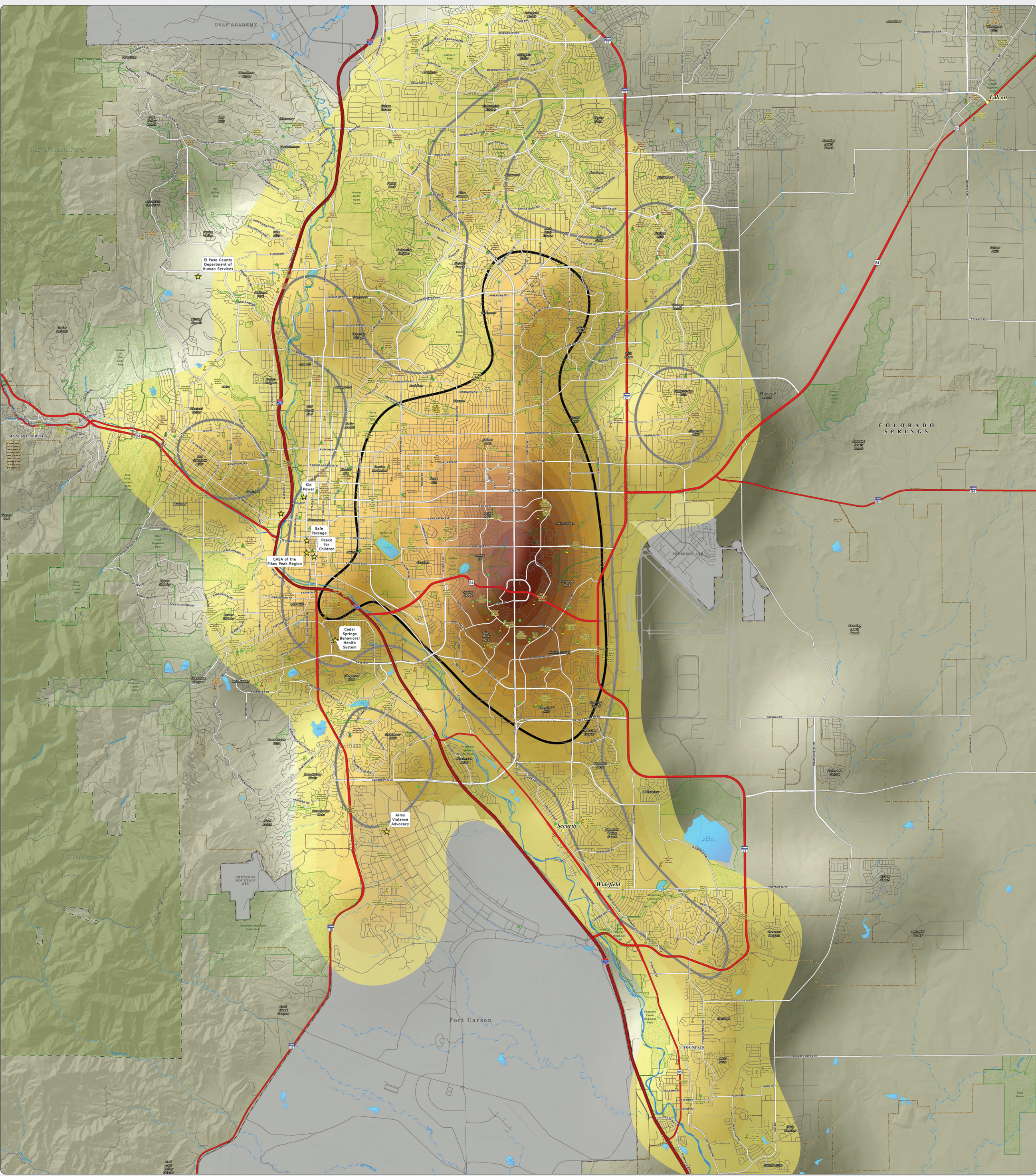
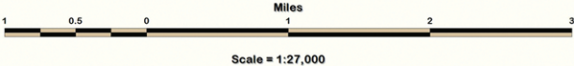


**C. 2016 Founded Allegation Density Per Square Mile:** This map of the Colorado Springs metro area shows the density of DHS child abuse/neglect founded allegations for the 2016 calendar year. The areas of no color represent the lowest density of 0-2 founded allegations per square mile. The yellow to dark orange colors represent areas of increased density, capped by the highest densities of 36.1-39 founded allegations per square mile, as seen near the intersection of Academy Boulevard and Fountain Blvd. The thick dark gray and light gray lines show the areas of high (greater than 100 referrals per square mile) and moderate (greater than 75, but less than 100 referrals per square mile) DHS referral density, as seen on the "2016 Referral Density Per Square Mile" map. The founded allegation data was provided by the El Paso County Department of Human Services.



**El Paso County Department of Human Services**  
**Not One More Child Coalition**  
~ 211 Services With 2016 Founded Density Per Square Mile ~  
El Paso County, Colorado



2016 Founded  
Density Per Square Mile

CS 9-3
3.1-6
6.1-9
9.1-12
12.1-15
15.1-18
18.1-21
21.1-24
24.1-27
27.1-30
30.1-33
33.1-36
36.1-39

Legend

High Density 2016 Referral Area (Greater than 100 Referrals Per Square Mile)	211 Services
Moderate Density 2016 Referral Area (Greater than 75 Referrals Per Square Mile)	Public Schools
US Interstate Highways	Private Schools
Major Roadways	Child Care Centers
Streets & Roads	Unincorporated Towns
Lakes & Reservoirs	Park Lands
Creeks	Incorporated Cities
	Pike National Forest
	Military Areas