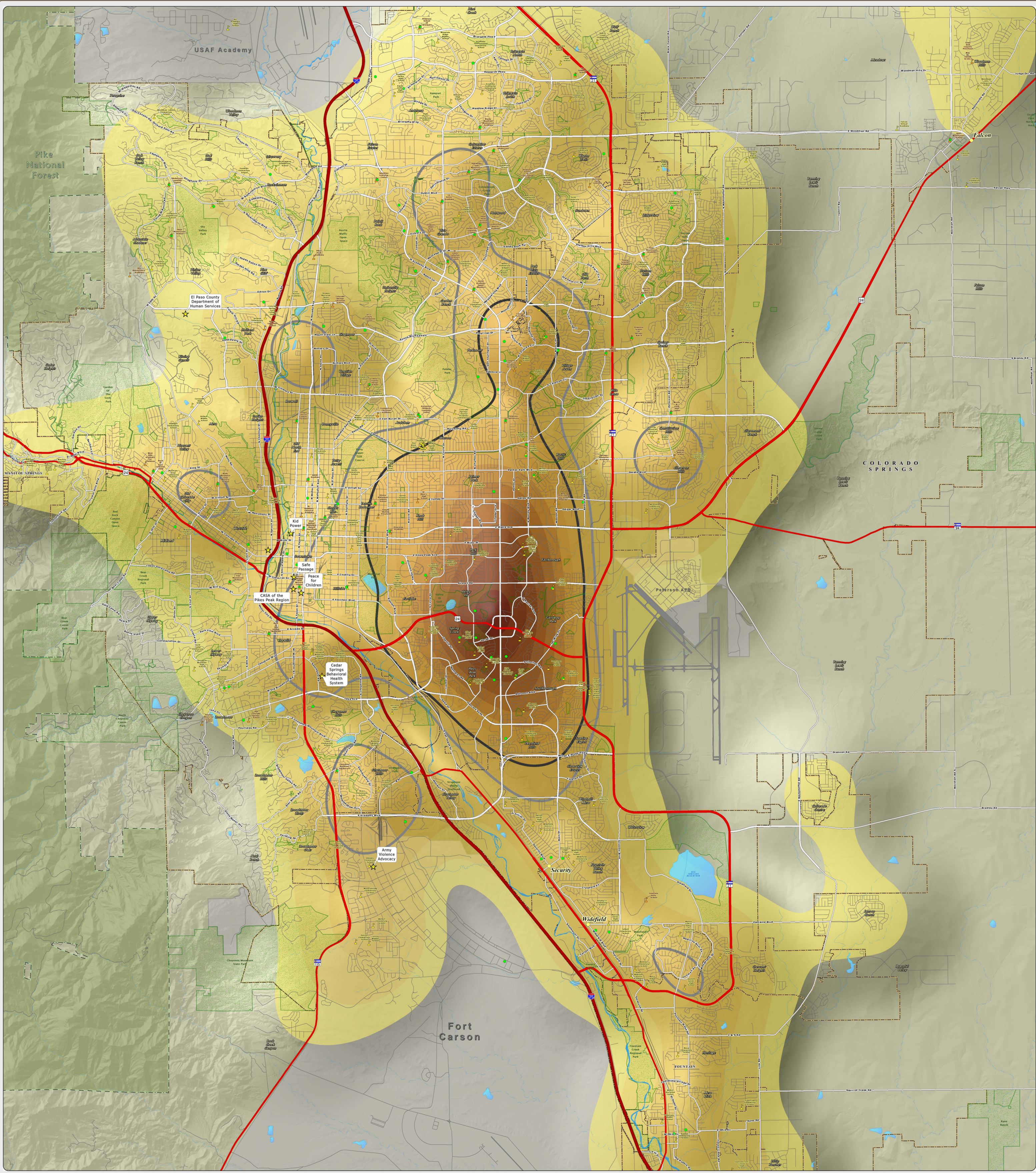


A. 2015 Referral Density per Square Mile: This map of the Colorado Springs metro area shows the density of DHS child abuse/neglect referrals for the 2015 calendar year. The areas of no color represent the lowest density of 0-10 referrals per square mile. The yellow to dark orange colors represent areas of increased density, capped by the highest density of 275-286 referrals per square mile, as seen near the intersection of Academy Boulevard and Fountain Boulevard. The thick dark gray and light gray lines show the areas of high (greater than 100 referrals per square mile) and moderate (greater than 75, but less than 100 referrals per square mile) DHS referral density. The referral data was provided by the El Paso County Department of Human Services.



Map Produced: March 2016

Copyright 2016 by the Board of County Commissioners, El Paso County, Colorado. All rights reserved. This map is for informational purposes only and does not constitute a warranty or representation of any kind. The map is provided as a service to the community and is not intended to be used for legal or other purposes. The map is provided as a service to the community and is not intended to be used for legal or other purposes.

El Paso County Department of Human Services

Not One More Child Coalition

~ 211 Services With 2015 Referral Density Per Square Mile ~

El Paso County, Colorado

1 0.5 0 2 3

Miles

Scale = 1:27,000

2015 Referral Density

Per Square Mile

- 0 - 10
- 10.1 - 25
- 25.1 - 50
- 50.1 - 75
- 75.1 - 100
- 100.1 - 125
- 125.1 - 150
- 150.1 - 175
- 175.1 - 200
- 200.1 - 225
- 225.1 - 250
- 250.1 - 275
- 275.1 - 286

Legend

- High Density 2015 Referral Area (Greater than 100 Referrals Per Square Mile)
- Moderate Density 2015 Referral Area (Greater than 75 Referrals Per Square Mile)
- US Interstate Highways
- US Highways
- Major Roadways
- Streets & Roads
- Lakes & Reservoirs
- Creeks
- 211 Services
- Public Schools
- Private Schools
- Child Care Centers
- Unincorporated Towns
- Park Lands
- Incorporated Cities
- Pike National Forest
- Military Areas