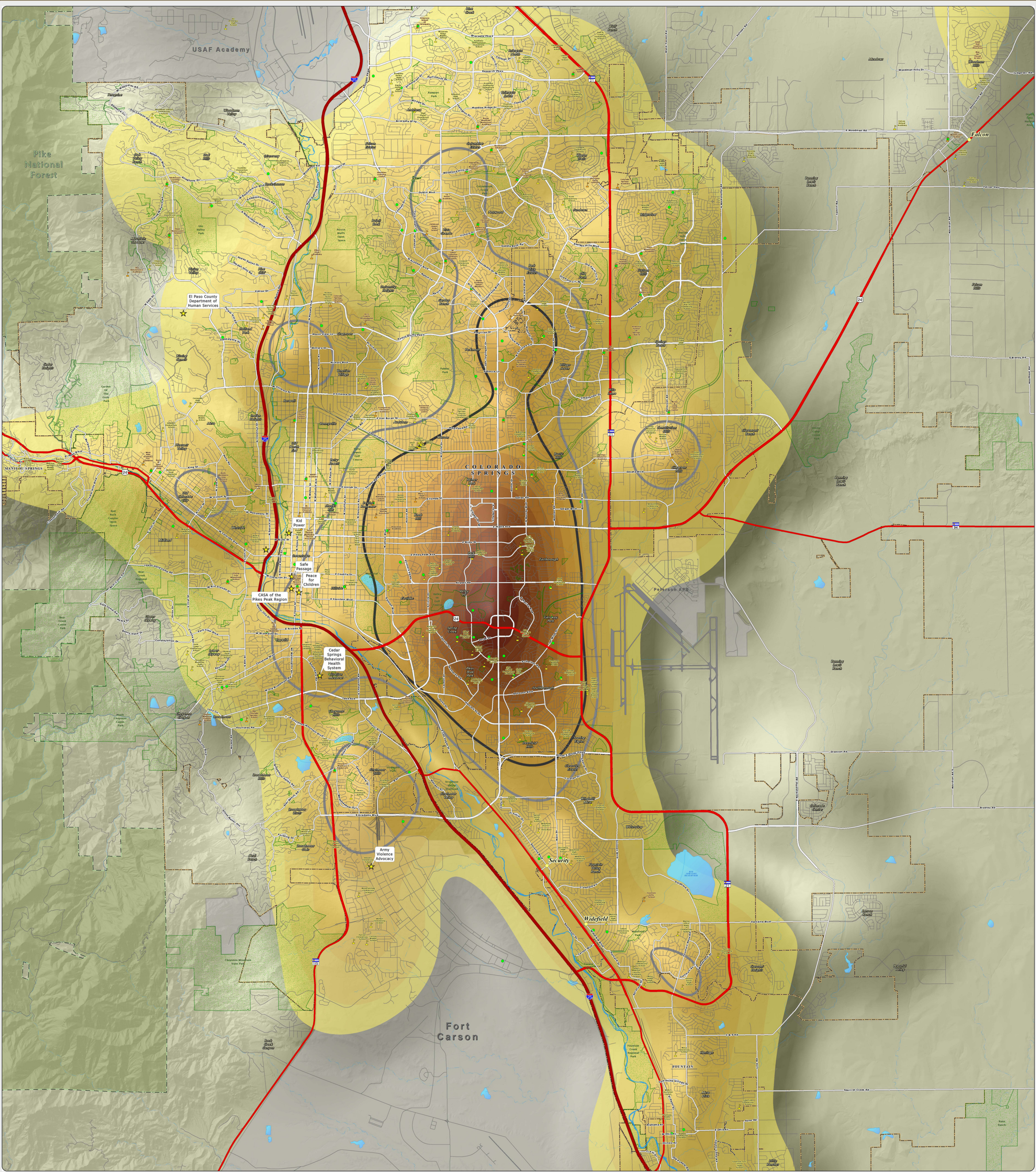


B. 2015 Assigned Assessment Density per Square Mile: This map of the Colorado Springs metro area shows the density of DHS child abuse/neglect assigned assessments for the 2015 calendar year. The areas of no color represent the lowest density of 0-5 assigned assessments per square mile. The yellow to dark orange colors represent areas of increased density, capped by the highest density of 110-120 assigned assessments per square mile, as seen near the intersection of Academy Boulevard and Fountain Boulevard. The thick dark gray and light gray lines show the areas of high (greater than 100 referrals per square mile) and moderate (greater than 75, but less than 100 referrals per square mile) DHS referral density, as seen on the "2015 Referral Density Per Square Mile" map. The assigned assessment data was provided by the El Paso County Department of Human Services.



El Paso County Department of Human Services
Not One More Child Coalition
~ 211 Services With 2015 Assigned Assessment Density Per Square Mile ~
El Paso County, Colorado

Map Produced: March 2016

Copyright 2016 by the Board of County Commissioners, El Paso County, Colorado. All rights reserved. This map is a product of the El Paso County Department of Human Services. It is not to be used for any other purpose without the written permission of the El Paso County Department of Human Services. The accuracy of the data is not guaranteed. The map is for informational purposes only.

2015 Assigned Assessments
Density Per Square Mile

- 0-5
- 5.1-10
- 10.1-20
- 20.1-30
- 30.1-40
- 40.1-50
- 50.1-60
- 60.1-70
- 70.1-80
- 80.1-90
- 90.1-100
- 100.1-110
- 110.1-120

Legend

- High Density 2015 Referral Area (Greater than 100 Referrals Per Square Mile)
- Moderate Density 2015 Referral Area (Greater than 75 Referrals Per Square Mile)
- US Interstate Highways
- US Highways
- Major Roads
- Streets & Roads
- Lakes & Reservoirs
- Creeks
- 211 Services
- Public Schools
- Private Schools
- Child Care Centers
- Unincorporated Towns
- Park Lands
- Incorporated Cities
- Pike National Forest
- Military Areas

Scale = 1:27,000