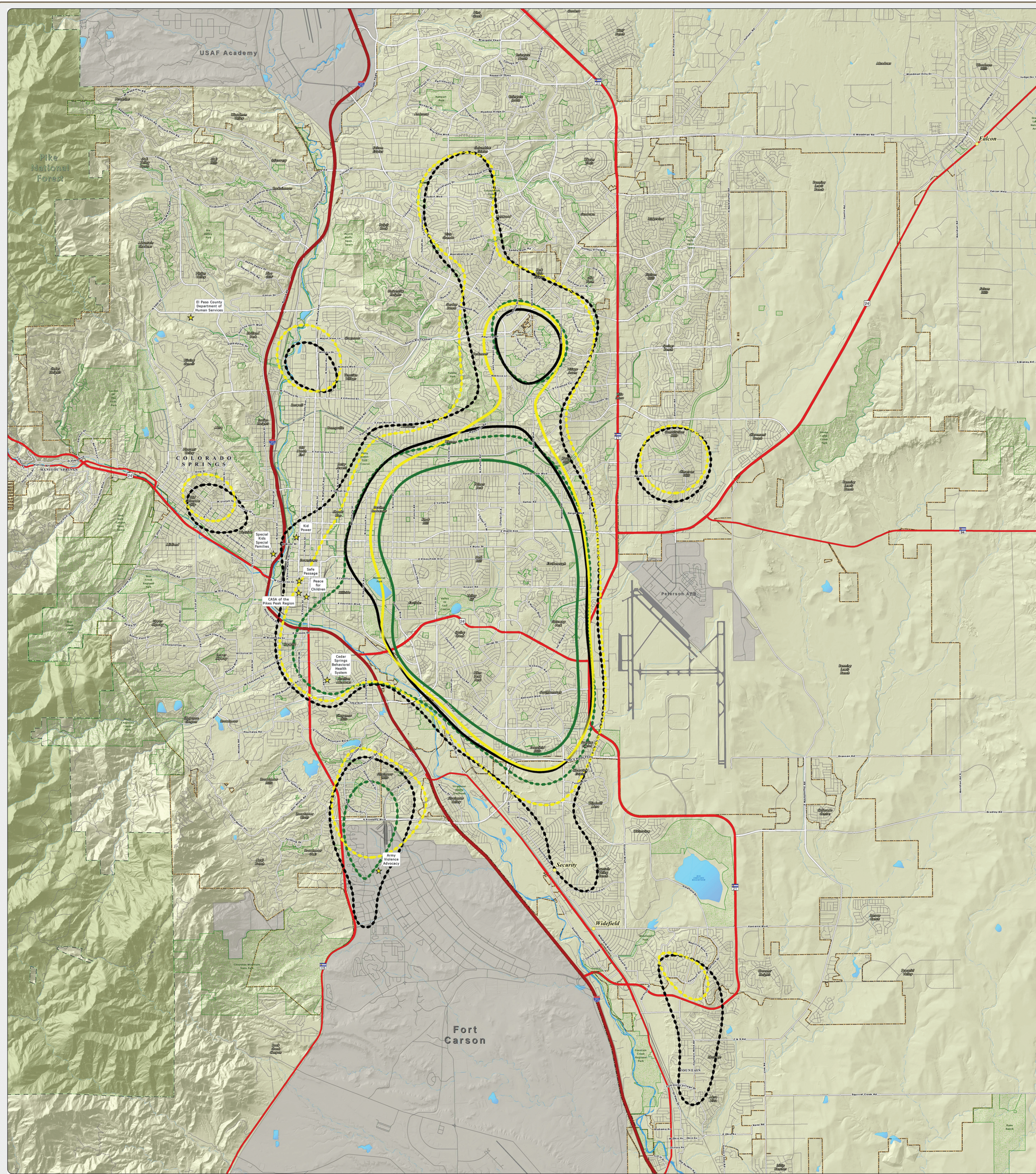


E. 2013-2015 Moderate and High Density Referral Areas: This map of the Colorado Springs metro area shows the moderate and high density areas from each year, 2013 through 2015. The solid lines show the areas of high (greater than 100 referrals per square mile) for each year, while the dotted lines show the areas of moderate (greater than 75, but less than 100 referrals per square mile) DHS referral density for each year, as seen on the "Referral Density Per Square Mile" maps. All data for each year is color-coded: 2013 (Green), 2014 (Black), 2015 (Yellow) A quick analysis shows that the high and moderate density areas are slowly expanding, particularly to the north.



El Paso County Department of Human Services
Not One More Child Coalition

~ 211 Services With 2013-2015 Moderate and High Density Referral Areas ~

El Paso County, Colorado

Map Revised: March 2016

Copyright 2016 by the Board of County Commissioners, El Paso County, Colorado. All rights reserved. All other trademarks and registered trademarks are the property of their respective owners. All other trademarks and registered trademarks are the property of their respective owners.

~ Legend ~

- ★ 211 Services
- 2015 High Density Area
- 2015 Moderate Density Area
- 2014 High Density Area
- 2014 Moderate Density Area
- 2013 High Density Area
- 2013 Moderate Density Area

* High density referral areas contain greater than 100 referrals per square mile, while moderate density referral areas contain greater than 75 but less than 100 referrals per square mile.

El Paso County, Colorado

Miles

Scale = 1:27,000