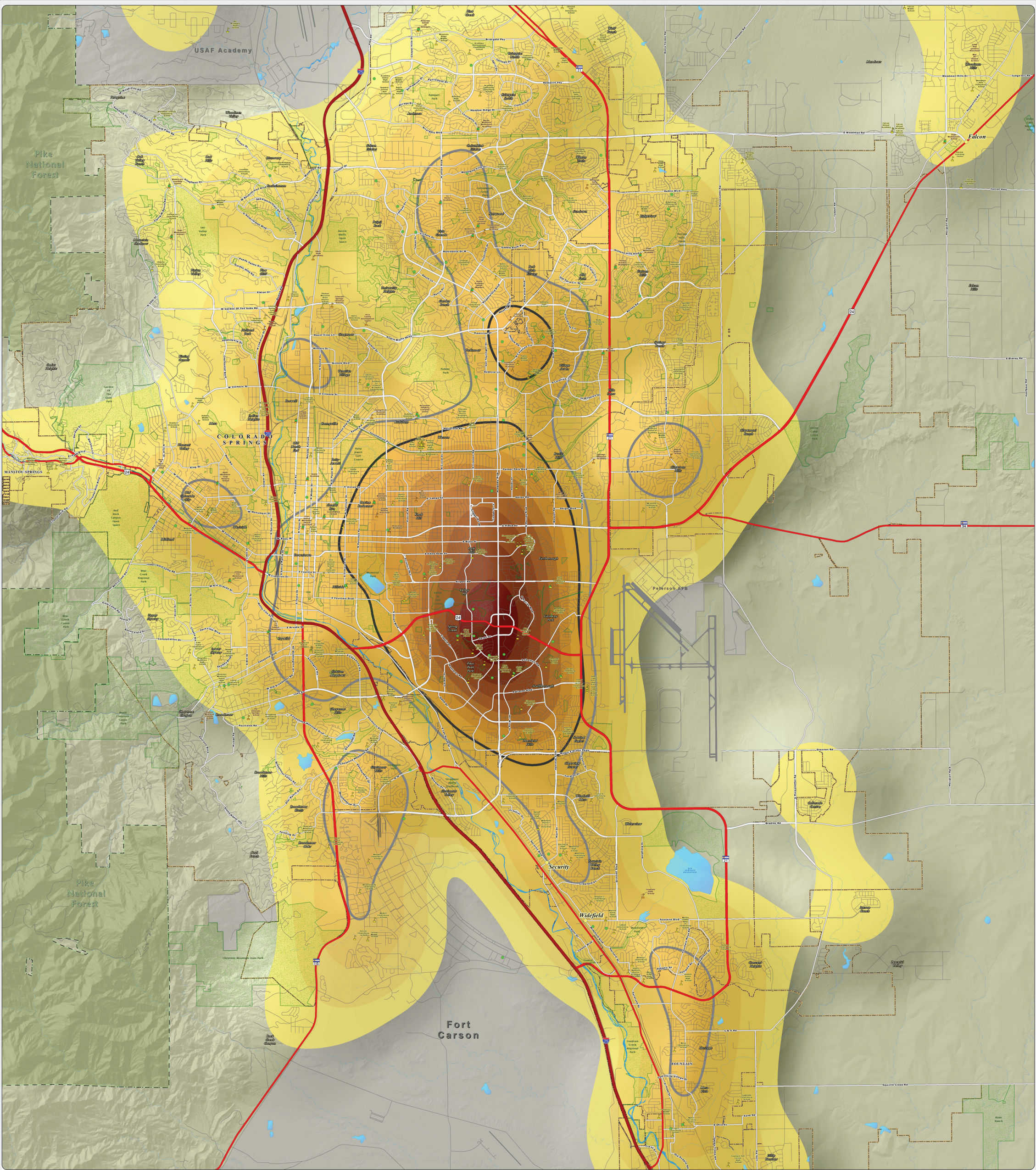


A.2014 Referral Density Per Square Mile: This map of the Colorado Springs metro area shows the density of DHS child abuse/neglect referrals for the 2014 calendar year. The areas of no color represent the lowest density of 0-10 referrals per square mile. The yellow to dark orange colors represent areas of increased density, capped by the highest density of 250-277 referrals per square mile, as seen near the intersection of Academy Boulevard and Fountain Boulevard. The thick dark gray and light gray lines show the areas of high (greater than 100 referrals per square mile) and moderate (greater than 75, but less than 100 referrals per square mile) DHS referral density. The referral data was provided by the El Paso County Department of Human Services.



**El Paso County Department of Human Services
Not One More Child Coalition**
~ 2014 Referral Density Per Square Mile ~
El Paso County, Colorado



- 2014 Referral Density Per Square Mile**
- 0 - 10
 - 10.1 - 25
 - 25.1 - 50
 - 50.1 - 75
 - 75.1 - 100
 - 100.1 - 125
 - 125.1 - 150
 - 150.1 - 175
 - 175.1 - 200
 - 200.1 - 225
 - 225.1 - 250
 - 250.1 - 277
- Legend**
- High Density 2014 Referral Area (Greater than 100 Referrals Per Square Mile)
 - Moderate Density 2014 Referral Area (Greater than 75 Referrals Per Square Mile)
 - US Interstate Highways
 - US Highways
 - Major Roadways
 - Streets & Roads
 - Unincorporated Towns
 - Public Schools
 - Private Schools
 - Child Care Centers
 - Lakes & Reservoirs
 - Creeks - Perennial
 - Creeks - Intermittent
 - Park Lands
 - Incorporated Cities
 - Pike National Forest
 - Military Areas

Map Produced: March 2015
Copyright 2015 by the Board of County Commissioners, El Paso County, Colorado. All rights reserved. No part of this map may be reproduced without the written permission of the Board of County Commissioners, El Paso County, Colorado.

Scale = 1:27,000