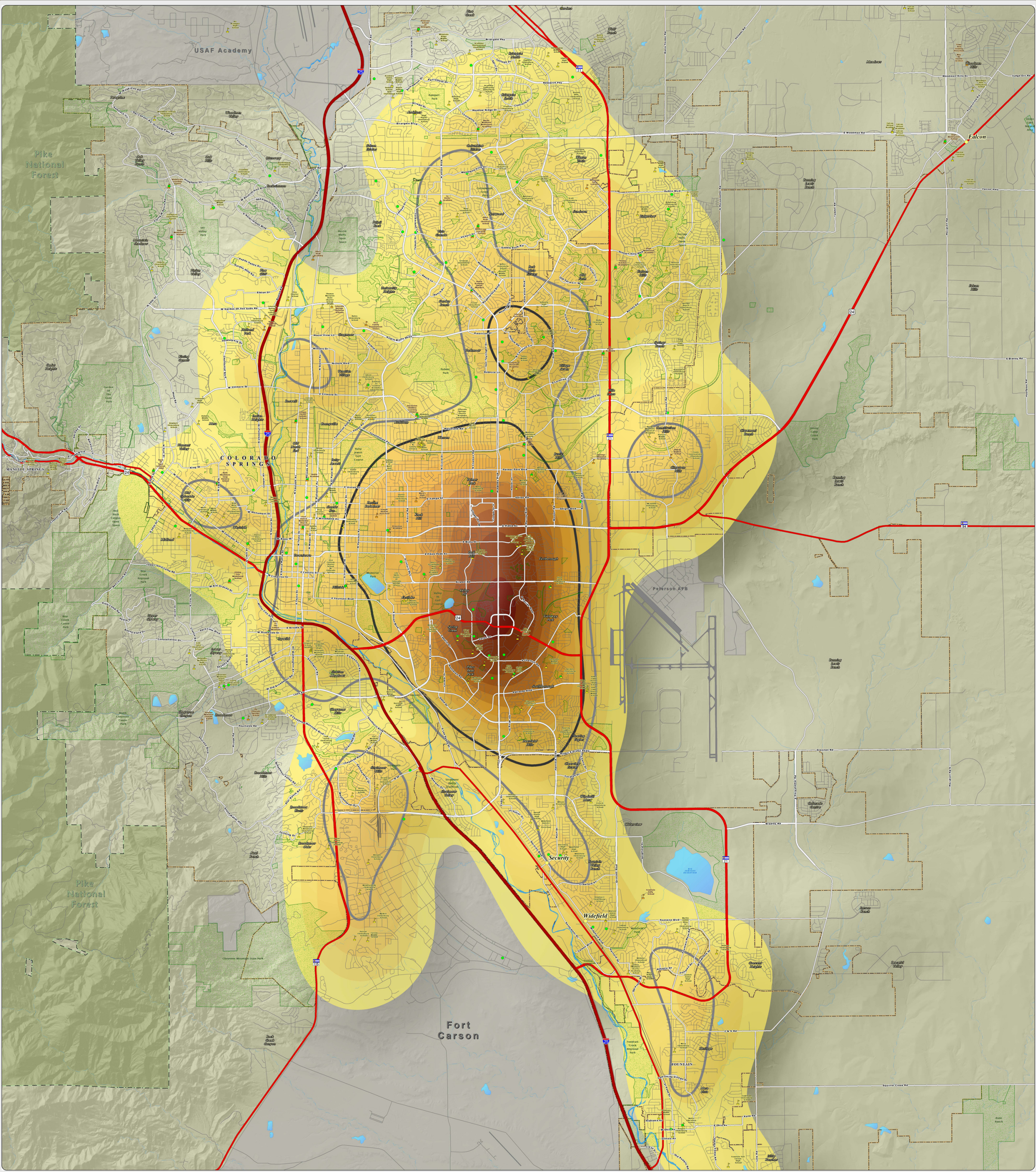


C. 2014 Founded Allegation Density Per Square Mile: This map of the Colorado Springs metro area shows the density of DHS child abuse/neglect founded allegations for the 2014 calendar year. The areas of no color represent the lowest density of 0-2 founded allegations per square mile. The yellow to dark orange colors represent areas of increased density, capped by the highest densities of 24-26 founded allegations per square mile, as seen near the intersection of Academy Boulevard and Fountain Boulevard, as well as in Fort Carson. The thick dark gray and light gray lines show the areas of high (greater than 100 referrals per square mile) and moderate (greater than 75, but less than 100 referrals per square mile) DHS referral density, as seen on the "2014 Referral Density Per Square Mile" map. The founded allegation data was provided by the El Paso County Department of Human Services.



El Paso County Department of Human Services
Not One More Child Coalition
~ 2014 Founded Allegation Density Per Square Mile ~
El Paso County, Colorado

Map Revised: March 2015

Copyright 2015 by the Board of County Commissioners, El Paso County, Colorado. All rights reserved. This map is a representation of the data provided by the El Paso County Department of Human Services. It is not a guarantee of accuracy. The map is for informational purposes only. The map is not to be used for any other purpose without the written permission of the El Paso County Department of Human Services.

Scale = 1:27,000

Legend

2014 Founded Allegations Density Per Square Mile	High Density 2014 Referral Area (Greater than 100 Referrals Per Square Mile)	Public Schools
0 - 2	14.1 - 16	Private Schools
2.1 - 4	16.1 - 18	Child Care Centers
4.1 - 6	18.1 - 20	Unincorporated Towns
6.1 - 8	20.1 - 22	Park Lands
8.1 - 10	22.1 - 24	Incorporated Cities
10.1 - 12	24.1 - 26	Pike National Forest
12.1 - 14		Military Areas

US Interstate Highways
US Highways
Major Roadways
Streets & Roads
Lakes & Reservoirs
Creeks