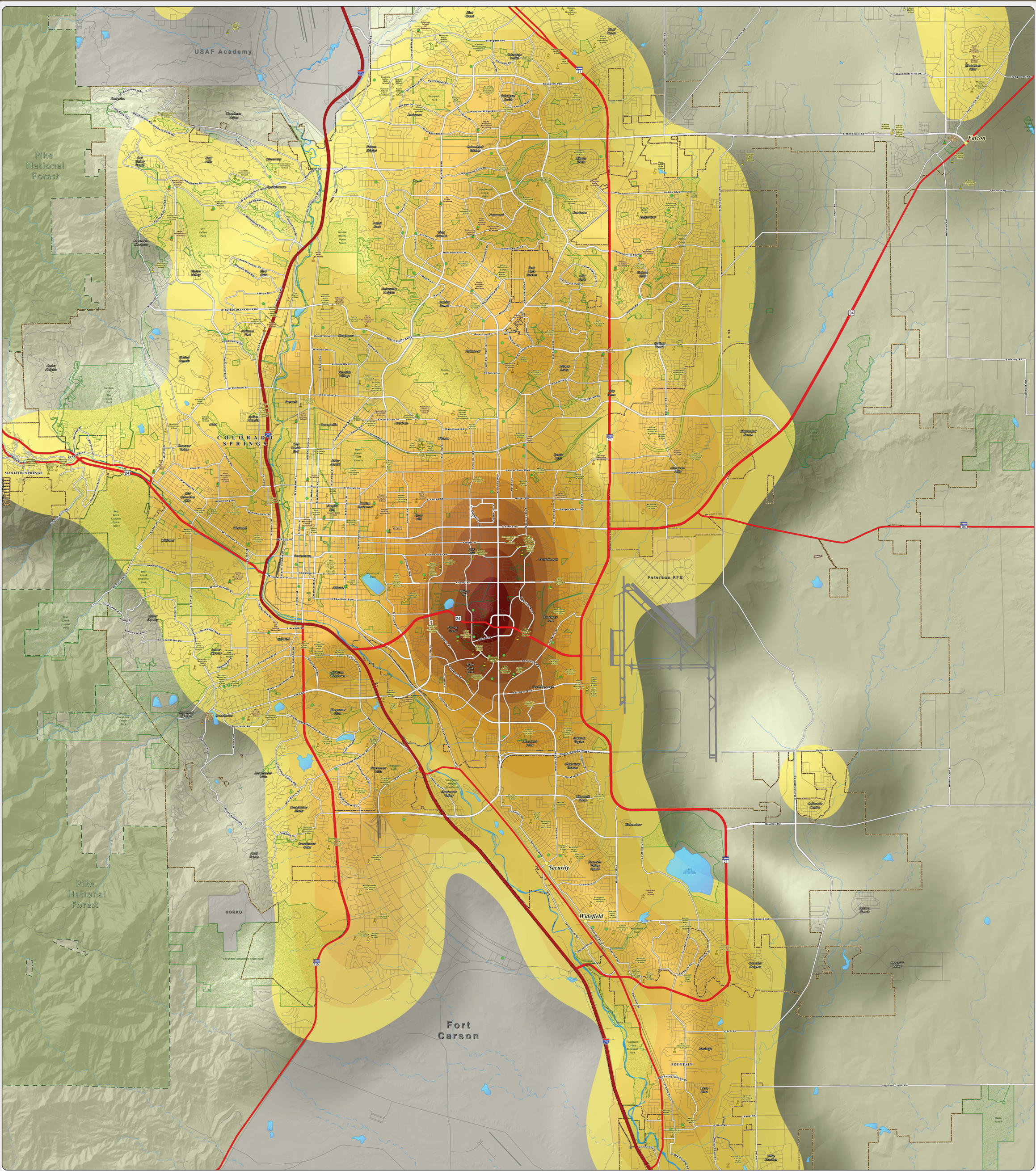


2013 Referral Density Per Square Mile: This map of the Colorado Springs metro area shows the density of DHS child abuse/neglect referrals for the 2013 calendar year. The areas of no color represent the lowest density of 0-10 referrals per square mile. The yellow to dark orange colors represent areas of increased density, capped by the highest density of 215-230 referrals per square mile, as seen near the intersection of Academy Boulevard and Fountain Boulevard. The referral data was provided by the El Paso County Department of Human Services.



**El Paso County Department of Human Services**  
**Not One More Child Coalition**  
~ 2013 Referral Density Per Square Mile ~  
El Paso County, Colorado

Map Produced: August 2014

Scale = 1:27,000

**2013 Referral Density Per Square Mile**

0 - 10
10.1 - 25
25.1 - 50
50.1 - 75
75.1 - 100
100.1 - 125
125.1 - 150
150.1 - 175
175.1 - 200
200.1 - 215
215.1 - 230

**Legend**

Public Schools	Lakes & Reservoirs
Private Schools	Creeks - Perennial
Child Care Centers	Creeks - Intermittent
US Interstate Highways	Park Lands
Major Highways	Incorporated Cities
Streets & Roads	Pike National Forest
Unincorporated Towns	Military Areas