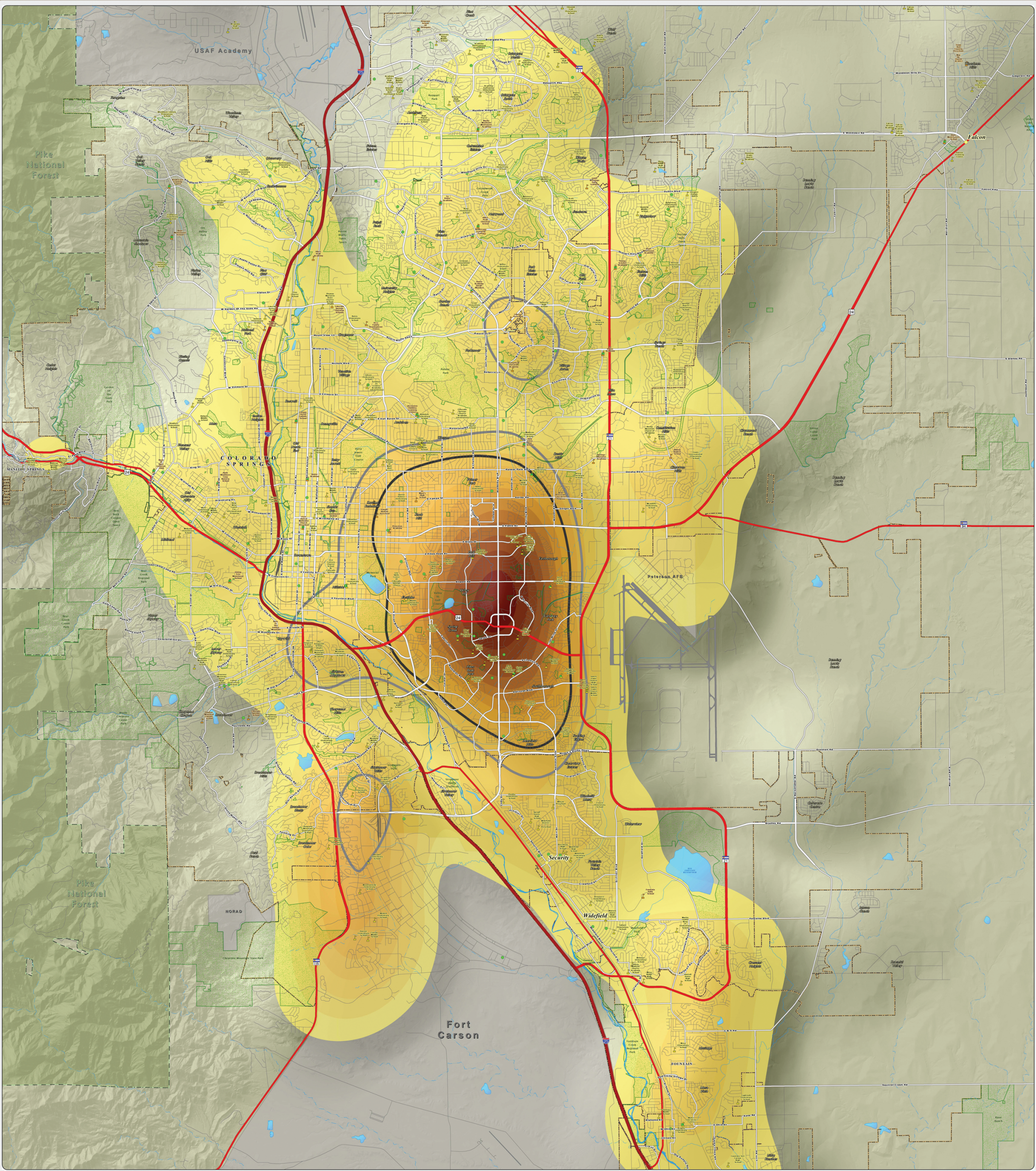


2013 Founded Allegation Density Per Square Mile: This map of the Colorado Springs metro area shows the density of DHS child abuse/neglect founded allegations for the 2013 calendar year. The areas of no color represent the lowest density of 0-2 founded allegations per square mile. The yellow to dark orange colors represent areas of increased density, capped by the highest densities of 26-28 founded allegations per square mile, as seen near the intersection of Academy Boulevard and Fountain Boulevard, as well as in Fort Carson. The thick dark gray and light gray lines show the areas of high (greater than 100 referrals per square mile) and moderate (greater than 75, but less than 100 referrals per square mile) DHS referral density, as seen on the "2011 Referral Density Per Square Mile" map. The founded allegation data was provided by the El Paso County Department of Human Services.



**El Paso County Department of Human Services**  
**Not One More Child Coalition**  
~ 2013 Founded Allegation Density Per Square Mile ~  
El Paso County, Colorado

Map Revised: August 2014

© 2014 El Paso County Department of Human Services. All rights reserved. No part of this publication may be reproduced, stored in a retrieval system, or transmitted, in any form or by any means, electronic, mechanical, photocopying, recording, or by any information storage and retrieval system, without the prior written permission of the Board of County Commissioners. All names, places, companies, and other trademarks are the property of their respective owners.

Scale = 1:27,000

**Legend**

<b>2013 Founded Allegations Density Per Square Mile</b>	<b>High Density 2013 Referral Area (Greater than 100 Referrals Per Square Mile)</b>	<b>Public Schools</b>
0 - 2	Greater than 100 Referrals Per Square Mile	Private Schools
2.1 - 4	Moderate Density 2013 Referral Area (Greater than 75 Referrals Per Square Mile)	Child Care Centers
4.1 - 6		Unincorporated Towns
6.1 - 8		Park Lands
8.1 - 10		Incorporated Cities
10.1 - 12		Pike National Forest
12.1 - 14		Military Areas
14.1 - 16		
16.1 - 18		
18.1 - 20		
20.1 - 22		
22.1 - 24		
24.1 - 26		
26.1 - 28		

US Interstate Highways  
Major Roadways  
Streets & Roads  
Lakes & Reservoirs  
Creeks