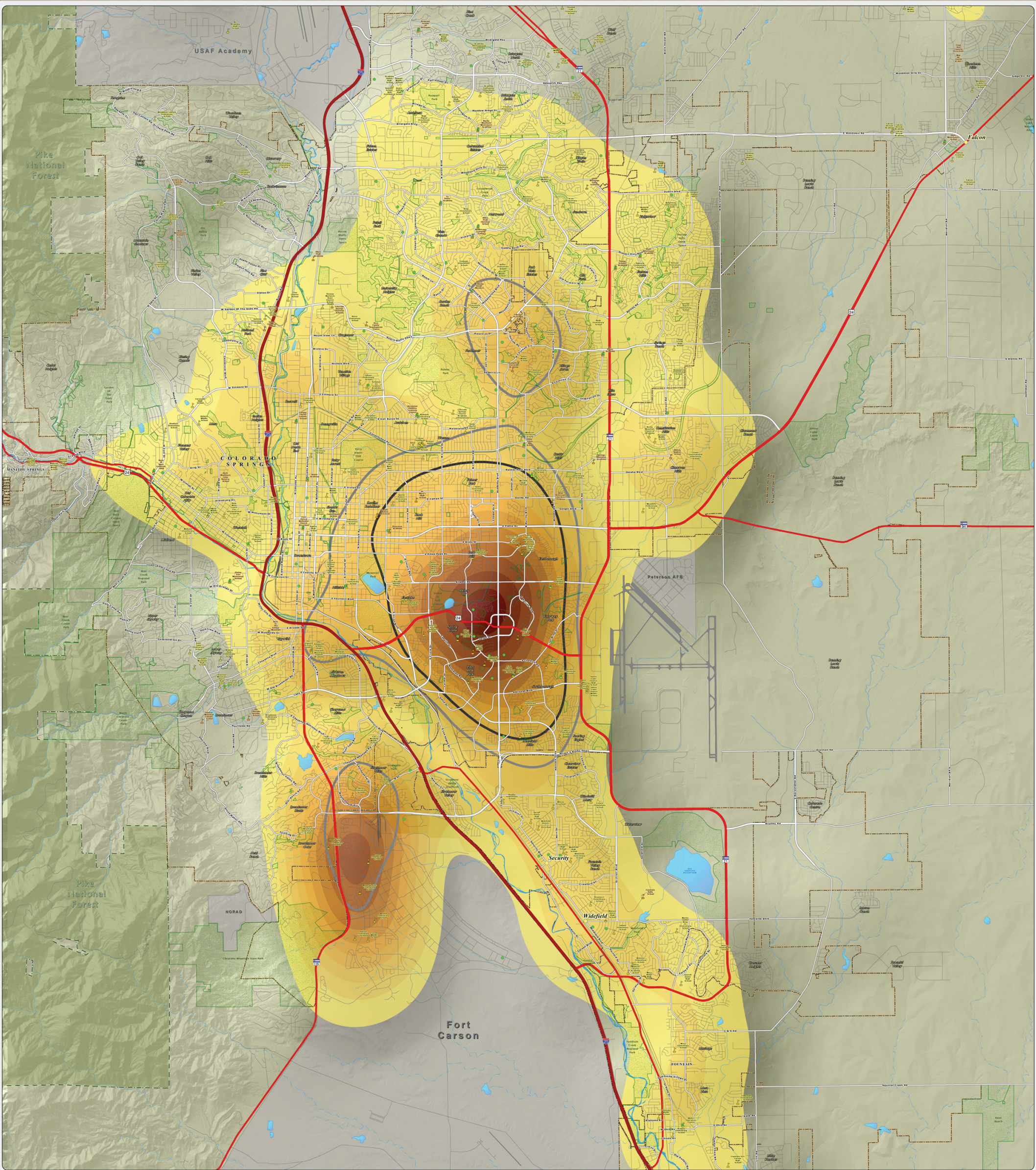


2011 Founded Allegation Density Per Square Mile: This map of the Colorado Springs metro area shows the density of DHS child abuse/neglect founded allegations for the 2011 calendar year. The areas of no color represent the lowest density of 0-1 founded allegations per square mile. The yellow to dark orange colors represent areas of increased density, capped by the highest densities of 10-12 founded allegations per square mile, as seen near the intersection of Academy Boulevard and Fountain Boulevard, as well as in Fort Carson. The thick dark gray and light gray lines show the areas of high (greater than 100 referrals per square mile) and moderate (greater than 75, but less than 100 referrals per square mile) DHS referral density, as seen on the "2011 Referral Density Per Square Mile" map. The founded allegation data was provided by the El Paso County Department of Human Services.



El Paso County Department of Human Services
Not One More Child Coalition
~ 2011 Founded Allegation Density Per Square Mile ~
El Paso County, Colorado

Map Revised: August 2014

Copyright 2014 by the Board of County Commissioners, El Paso County, Colorado. All rights reserved. No portion of this document may be reproduced without the written permission of the Board of County Commissioners. All other rights reserved. This document is the property of El Paso County, Colorado. It is to be used for the purpose of providing information to the public and is not to be used for any other purpose.

0 0.5 1 2 3 4 5 6

Miles

Scale = 1:27,000

2011 Founded Allegations Density - Per Square Mile

0 - 2	12.1 - 14
2.1 - 4	14.1 - 16
4.1 - 6	16.1 - 18
6.1 - 8	18.1 - 20
8.1 - 10	20.1 - 22
10.1 - 12	22.1 - 24

Legend

- High Density 2011 Referral Area (Greater than 100 Referrals Per Square Mile)
- Moderate Density 2011 Referral Area (Greater than 75 Referrals Per Square Mile)
- US Interstate Highways
- US Highways
- Major Roadways
- Streets & Roads
- Lakes & Reservoirs
- Creeks
- Public Schools
- Private Schools
- Child Care Centers
- Unincorporated Towns
- Park Lands
- Incorporated Cities
- Pike National Forest
- Military Areas