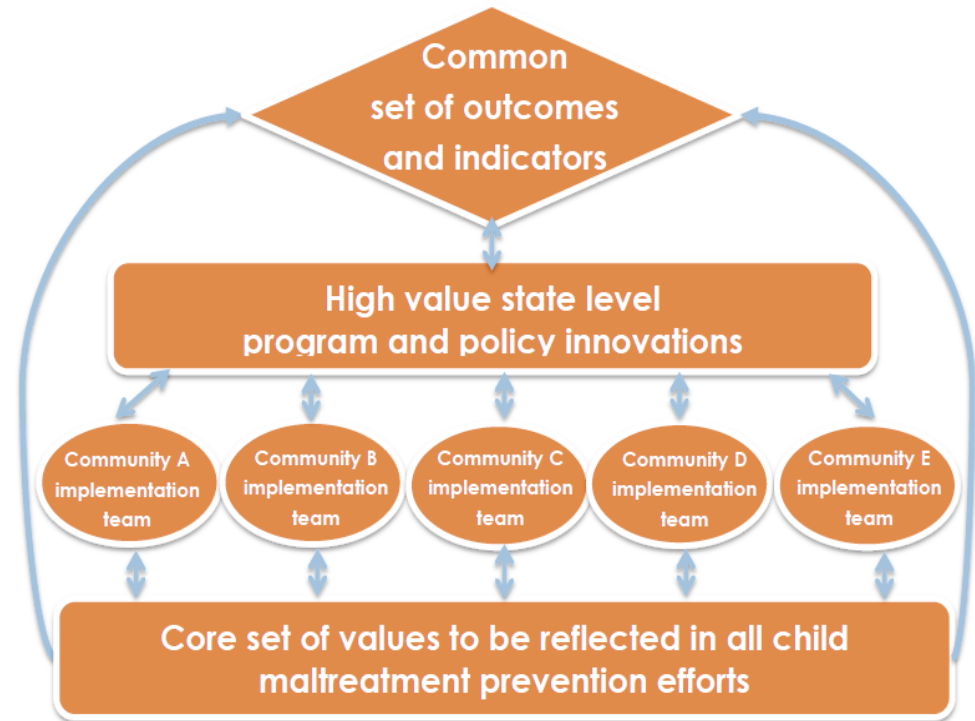




Child Maltreatment Prevention Framework for Action Community Planning Process

Process Began at the State Level with a Plan for Preventing Child Maltreatment

- Guide strategic thinking
- Align strategies
- Maximize shared outcomes
- Mobilize communities
- Monitor systems
- Track implementation
- Measure progress
- Incorporate Strengthening Families Framework and Two-Generation Approaches
- **Overall Goal**
 - **Prevent** Child Maltreatment
 - **Promote** Child Well-Being



Strengthening Families Framework

Five Protective Factors

1. Parental resilience
2. Social connections
3. Knowledge of parenting and child development
4. Concrete support in times of need
5. Social and emotional competence of children



Two-Generation Approaches

Two-generation approaches provide opportunities for and meet the needs of **children and their parents together**. They build education, economic assets, social capital, and health and well-being to create a legacy of economic security that passes from one generation to the next.

Focus on Child Maltreatment Prevention

From

To

“At risk” families

All families

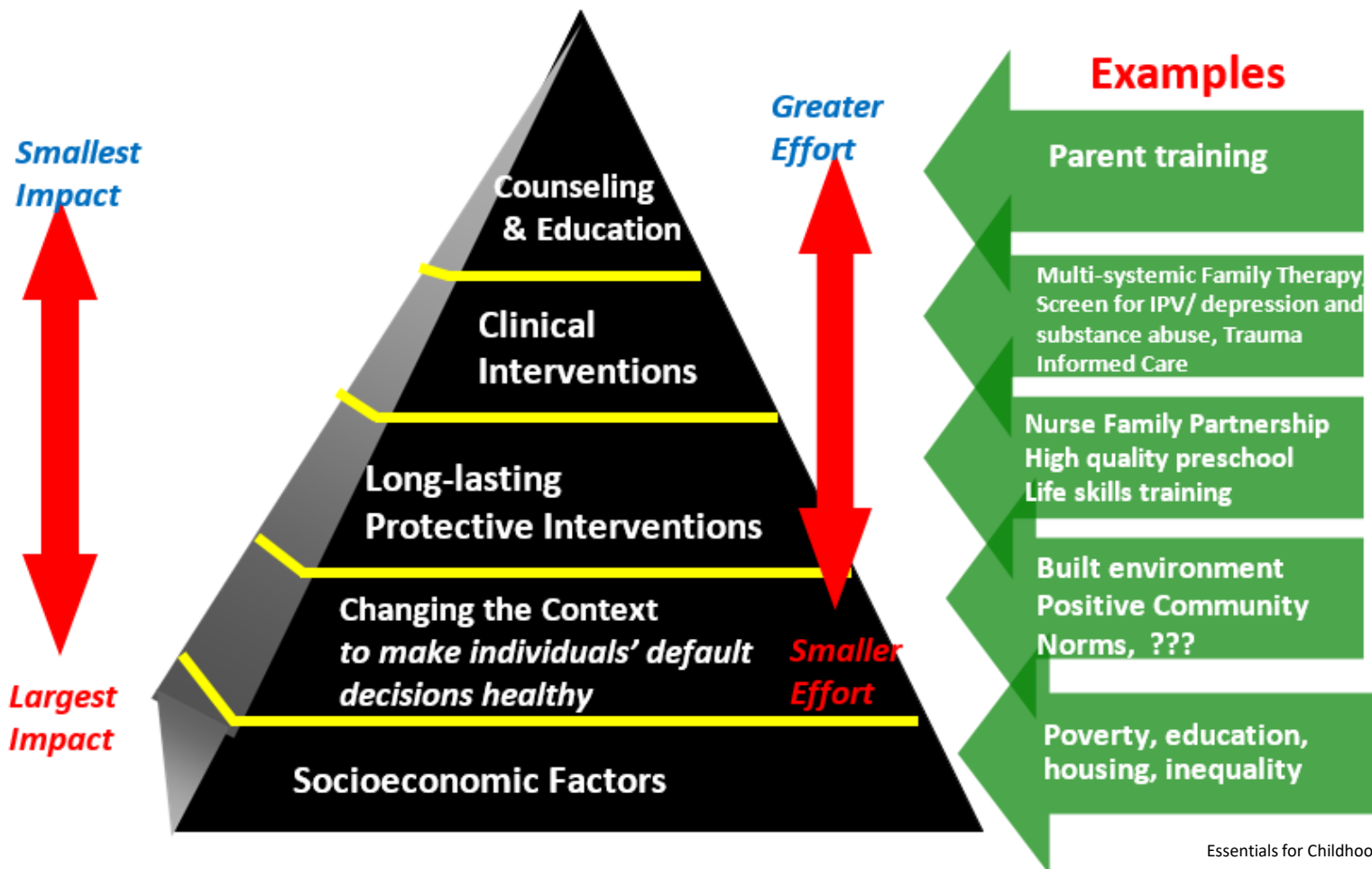
Risk factors

**Protective
factors/buffers to
stress and trauma**

Intervention

**Prevention:
Promoting strong
families, SSNEs and
healthy
development**

Health Impact Pyramid Adapted to Child Maltreatment



Framework Components – Road Map for State and Local Work

- Identify foundational principles – agree on elements you want reflected in *all* of your interventions and policies
- Establish a set of overarching outcomes and related indicators – agree on a common way to assess progress at the individual and population levels
- Identify high priority strategies within channels for change – assist communities in selecting their most promising “best bets.” Encourage use of Two-Generation Approach and Strengthening Families Protective Factors Framework in direct services
- Develop tools to support strategic thinking at the community level

SHARED VISION

All Children are Valued,
Healthy, and Thriving

PRESENT

ACTION

FUTURE



Foundational
Principles



Channels
for Change



Overarching
Outcomes

For more information on the framework & companion tools, visit
www.co4kids.org/framework

PRESENT



Foundational Principles

Monitoring Program Implementation

Study what contributes to or inhibits successful implementation

Strengthening the Work Force

Increase provider knowledge and skills

Fostering Data Integration

Share information within and across agencies

Incentivizing Continuous Quality Improvement

Raise the performance bar and use timely data to adjust practice

Honoring Family and Participant Voice

Engage those you seek to help and encourage advocacy skills

Driving Policy Integration

Partner with others to increase success

ACTION



Channels for Change

Individualized Services



STRATEGIES

Home Visiting

Parent Education

Mobility Mentoring and
Financial Literacy

Respite and Crisis Care

Family Development and
Goal Setting

Screening for Substance
Abuse, Intimate Partner
Violence, and Depression

**Individualized Service Strategies must build protective factors and use a two-generation approach to meeting the needs of the whole family.*

Agency Collaboration and Community Capacity Building



STRATEGIES

Integrated Care

Community Effects on Child
Maltreatment and Strategies
at the Community Level

Utilizing Technology

Early Learning Communities

Community Norms Change

Organizational and Practice Change



STRATEGIES

Evidence-Based Practice

Implementation Science

Workforce Development

Performance Monitoring



STRATEGIES

Policy Agenda Setting

Innovating Federal and State
Health Care Funding

Transforming Existing
Legislation to Better Meet
the Needs of Families

Policy Reforms

FUTURE



Overarching Outcomes



Child Well-Being and Achievement

Maximize developmental potential of all children

INDICATORS

Well child check-ups, developmental screening, social emotional health, reading proficiency



Consistent High Quality Caregiving

Ensure all caregivers foster positive child development

INDICATORS

Incidence of child maltreatment, early childhood professional credentials and quality rated child care, appropriate child development expectations, safe sleep practices, spending time together as a family, child welfare placement stability



Caregiver Well-Being and Achievement

Provide parents and other primary caregivers the support they need to succeed

INDICATORS

Financial security, educational attainment, social connections, and screening for interpersonal violence/pregnancy-related depression/substance abuse

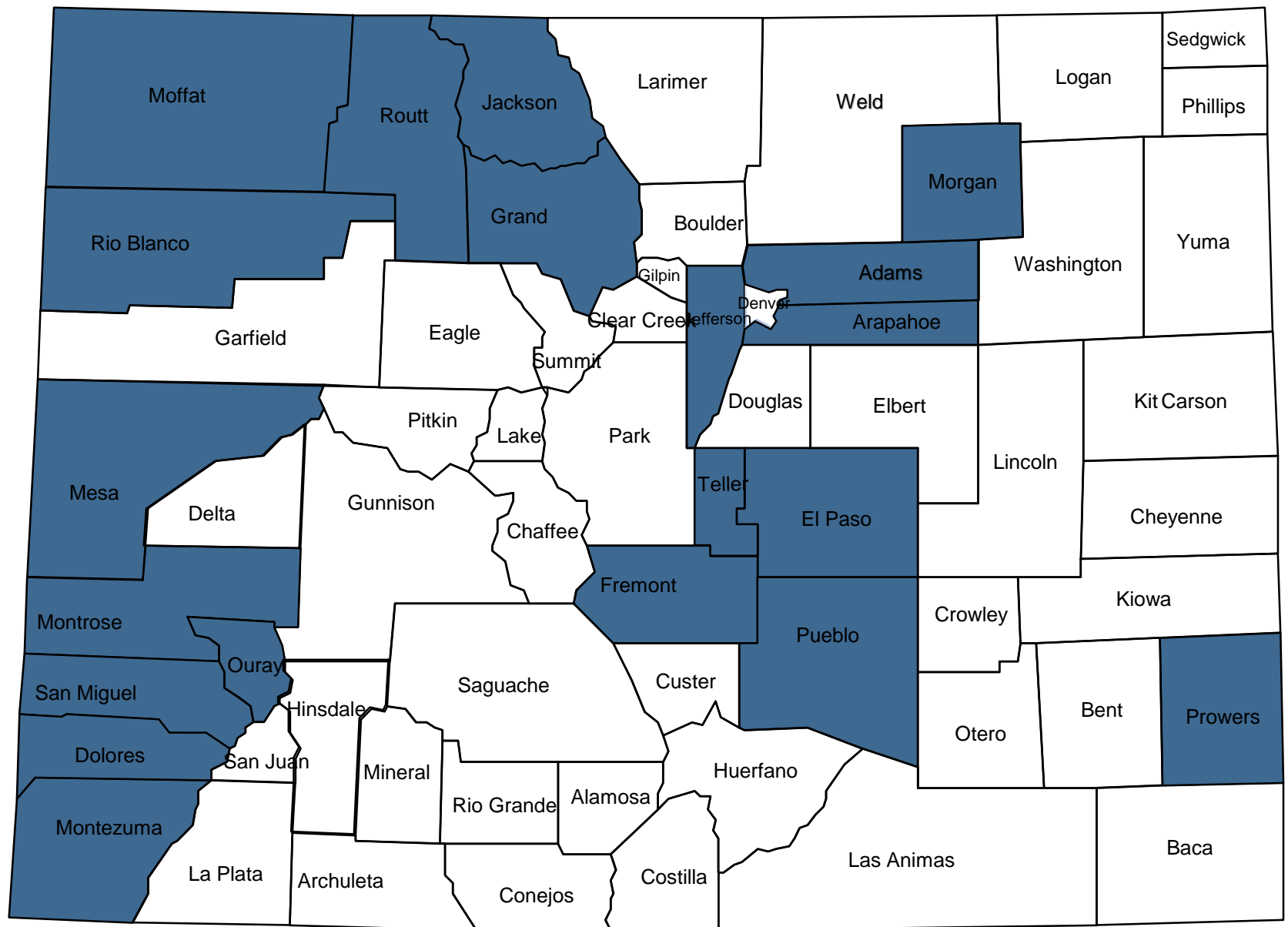


Safe and Supportive Neighborhoods

Create a context of collective responsibility for children

INDICATORS

Community cohesion, access to basic services, family friendly employment



Why Create a Local Plan?

- Build upon existing and well-proven collaborations
- Encourage new partnerships at different levels of government or other community-based organizations
- Direct priorities relevant to your community
- Provide opportunity for public input
- Strengthen social cohesion of a community in solving a specified challenge (collective responsibility)
- Establish program level indicators to track progress
- Identify and leverage existing resources already available in your community
- Build mutual trust and respect through a participatory planning process

The ability of any plan to touch the lives of families requires that community leaders tailor the plan to fit local realities

Community Planning



Task 1.1: Form Core Leadership Group



Task 1.2: Develop Community Profile



Task 1.3: Secure Parent Input

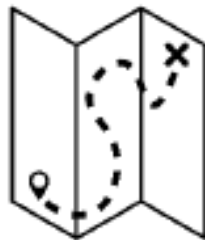


Task 1.4: Catalogue Local Services

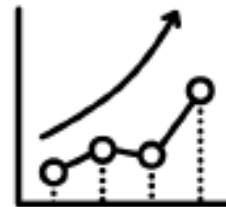
PLANNING



Task 2.1: Set Your Priorities



Task 2.2: Outline Your Implementation Plan



Task 3.1: Do it and do it better



Task 3.2: Sustain the Change

PLANNING

IMPLEMENTATION

Community Planning

Key tasks to begin the community planning process



- **TASK 1: Framing the scope of the local plan** (selecting your leadership team, developing a picture of your community's demographic, health, and economic parameters, securing input from parents, and cataloging local service options).
- **TASK 2: Planning specific action steps** (setting your priorities and outlining an implementation plan).
- **TASK 3: Monitoring your progress** (developing strategies to insure continuous quality improvement and sustaining change over time).

Task 2.1 – Set Your Priorities

- Examine strengths and gaps revealed by the data
- Select no more than 3-4 to implement
- Factors to consider:
 - Ease of implementation
 - Potential cost for not addressing the area of interest
 - Interested partners?
 - Funding sources – is there additional support from other entities or sources?
 - Sustainability – are there components that can be systematically embedded?
 - Monitoring – consider the ease of tracking and collecting data

Task 2.2 – Develop an Implementation Plan For Child Maltreatment Prevention in your Community

- For each of your 3-4 chosen priorities, develop a plan for implementation (lead, budget, timeline and monitoring)
- The plan should describe a logical sequence of events that will result in change related to the overarching outcomes
- The plan serves as foundation for monitoring, evaluating and communicating progress

Task 2.2 – Implementation Plan Completed by 7/18

Child Maltreatment Prevention Framework for Action | Community Action Planning Example

Community Name:

Date Created:

Date Reviewed/Updated:

GOAL: Build Capacity for Evidence-Based and Promising Child Abuse and Neglect Prevention Programs by increasing the number of effective evidence based Child Maltreatment prevention programs available in County X.

CHANNELS FOR CHANGE: Strategies for Organizational and Practice Change – Evidence Based Practice



Objective: Increase the use of evidence-based services in County X by X% over baseline or as measured by the number of community-based programs implementing evidence-based programs.

ACTION PLAN					PERFORMANCE MEASURES			
Activity	Start End Date	Resources Required	Person/ Organization Responsible	Result of Activity (Short/Long-Term Outcomes)	Short Term Indicator	Long Term Indicator	Source of Data	Alignment w/ State Framework Outcomes
Catalog EB services and determine % of EB programming out of program total.	10-15-17	Staff time	FRC coordinator PH specialist	A directory of evidence-based services which includes key information (e.g., eligibility criteria, funding, etc.)	% of community based organizations using EBPs		Community Directory	N/A
Train professionals in EB programming. Track outcomes of EB services.	12-15-17	Program/training cost; Staff time	FRC staff Workgroup members	Increased knowledge of EB services by professionals	# of professionals trained in EBPs	Incidence of child maltreatment	CDHS-TRAILS Data	Consistent high-quality care giving
Research and implement EB programming that addresses service gaps.	1-15-18	Staff time; EB programs; training costs	Core team members	Increased access to an array of services; formation of new community partnerships	# of parents reporting increased access to services	Access to services Incidence of child maltreatment	Qualitative Survey CDHS-TRAILS Data	Safe and supportive neighborhoods Consistent high-quality care giving



Task 3.0 –Implement the Plan For Child Maltreatment Prevention in your Community

- Implementation funding opportunities will be available through state agencies (e.g., CDHS), private foundations, local funding sources or other agencies that are interested and invested in child maltreatment prevention efforts in 2018 and beyond.
- Development of a local prevention plan will strengthen a community's request for implementation funds.

